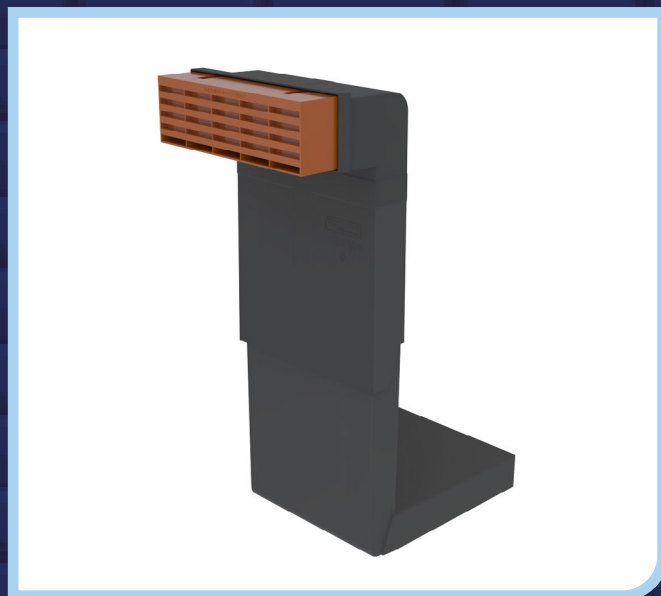


# 1201XL+

## INSTALLATION ADVICE

**Adjustable telescopic underfloor ventilator  
for up to 7 brick courses**



-  Manufactured to BS EN ISO 9001 and BS EN ISO 14001
-  Satisfies all NHBC requirements
-  Complies with all relevant Building Regulations
-  Meets all relevant British Standards

1.

Always use in conjunction with a 1201AB airbrick from Timloc.

2.

The airbrick and upper front opening of the telescopic underfloor ventilator must be positioned above the finished external ground level - usually at the same level as the ground level DPC.

3.

The lower rear opening of the product must project down to the level of the underfloor void and must not be obstructed by the floor construction. A vertical extension sleeve is available to fit with this product if the standard 7 course step is not adequate.

4.

Building Regulations require a free airflow below suspended ground floors of at least 1500mm<sup>2</sup> per metre run of wall. This can be achieved by spacing the ventilators at 4m centres, however, such a wide spacing is not recommended as stagnant air pockets could form in the underfloor void. Timloc recommend a spacing of not more than 2m centres to comply with NHBC standards.

5.

The NHBC recommend that underfloor ventilators are spaced at a maximum of 2m centres, with ventilators also positioned not more than 450mm from the ends of the wall.

6.

As a minimum requirement ventilators should be positioned down two opposite sides of the building so as to create a cross flow ventilation action. It is good practice to position ventilators around the full perimeter of the building, particularly with complex building designs.

7.

If the underfloor void is separated by dividing walls, openings must be provided to allow a free flow of air around the underfloor void.

8.

The standard ventilator will fit into a cavity wall with an external leaf of 100-102.5mm, a minimum cavity width of 50mm and across a cavity of 150mm plus internal 100mm. External and internal horizontal extension sleeves are available to accommodate thicker walls or wider cavities.

9.

To be installed with a DPC Cavity tray and wall weeps to collect any water ingress. We recommend Timloc's IL4 and 2 weeps (Invisiweep or 1143).

10.

It may be a requirement to protect with a lintel for direct loads.

**N.B.** The 1201XL+ is designed for use with a 1201AB airbrick. It can be used with a clay airbrick but this will reduce the overall airflow.



**Scan or click to view the  
product datasheet**