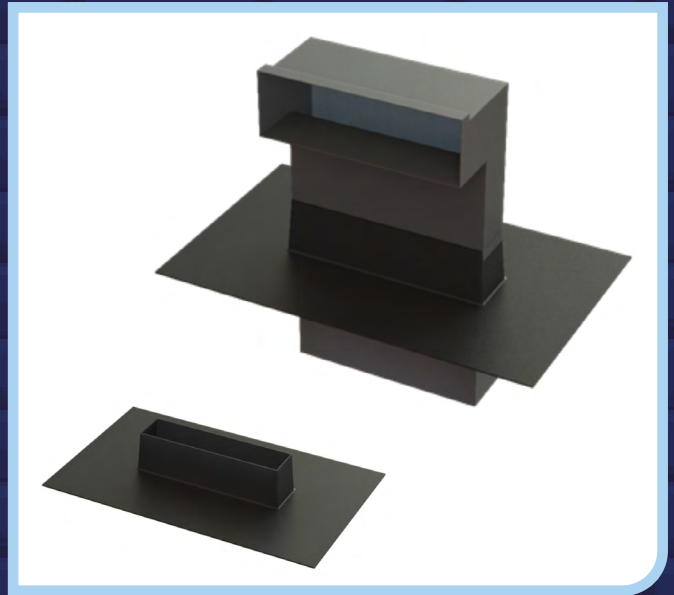



1201 TOP HAT

INSTALLATION ADVICE


**Top hat collar for sealing telescopic
underfloor vent**



 Satisfies all NHBC requirements

 Manufactured to BS EN ISO 9001-2015

 Complies with all relevant Building Regulations

 Meets all relevant British Standard

1.

Cut DPC / cavity trays to work around telescopic underfloor vent. Separate top and bottom sections of 1201 telescopic vent and slot 1201 top hat over either half.

2.

Position 1201 top hat to required position to sit over DPC / cavity tray.

3.

Unit will require tape seal for gas barrier - Tape sold separately.

4.

Use gastite G-Tape01 to make seal around full flat base surface.

5.

Use girth tape G-tape02 to seal upstand to 1201 telescopic vent.

Scan or click to view the
product datasheet

