



by **timloc**

HIP TRAYS

DATASHEET

Provides a straight and stable platform for hip tiles during installation

Use

- Most types of slate, concrete or clay hip tiles.
- Round or angled hip tiles.
- Most pitched roof types from 15-55°.
- New build and retro-fit projects.

Features & Benefits

- Installs directly over the ridge roll on hip details.
- Creates a level, stable base to support tiles along the hip of the roof.
- Easily trimmed to the required length.
- Simple to shape for the angles needed at the eaves or ridge/hip junction.

Quality

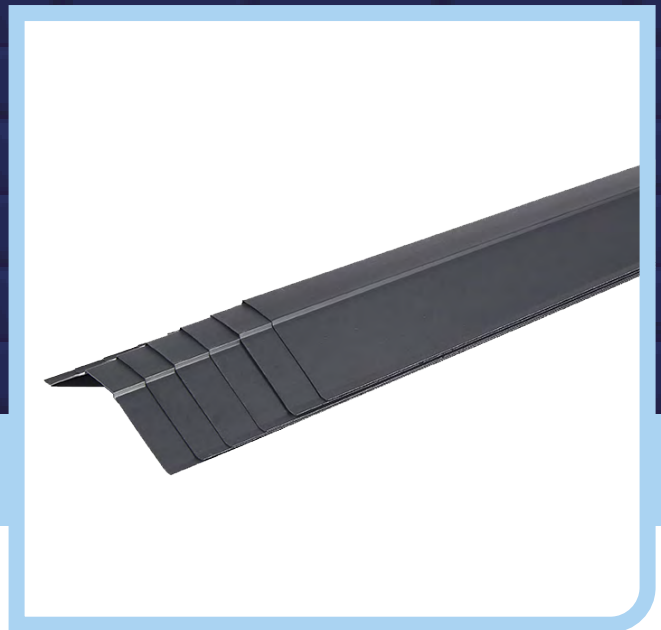
- Helping to meet:
 - BS 5534 Code of practice for slating and tiling.
 - BS 5250 Code of practice for control of condensation in buildings.
- Complies with all other relevant regulations and standards.
- Independently tested and complies with BS 8612.

Material & Colour

- Recycled PVC.
- Black.

Product Codes

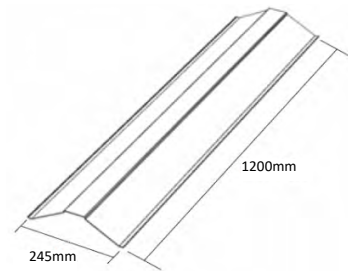
Description	Length	Colour	Quantity	Lead Time	Product Codes
Hip trays	1.2m	Black	6 pack	Next Working Day	44623
Hip trays (unbagged)	1.2m	Black	1000 (pallet)	Next Working Day	44625



How to Order

- To be used in conjunction with the 6m Roll Out Dry Fix Ridge Kit.
- Allow for a minimum hip tray overlap of at least 150mm onto the next tray.

Product Dimensions



Installation Advice

- Please refer to timloc.co.uk for recommended installation guidance