

THIN LEADING EDGE VERGE DATASHEET

Dry Fix Verge System for Thin Leading Edge Verge Roof Tiles



Use

- Developed for Thin Leading Edge roof tiles.
- Suitable for most pitched roof types from 15-55°.
- Verges with or without bargeboards.
- New build and refurbishment projects.

Features & Benefits

- Long lasting, reliable, and virtually maintenance free.
- Protects against wind uplift, water ingress & general deterioration.
- Easy, fast, clean and generally safer mortar free installation.
- Allows virtually all-weather installation.
- Strong but supple for easy flexing and sliding along the tiles.
- Secure fit around the tile reassurance.
- Maintains consistently smart appearance.
- Not impacted by building settlement.
- Meets mechanical fix legislation requirements.
- The system also offers a unique steel fixing bracket option that presents flexible fixing points for use with alternative size counter battens or straight onto tile batten ends. The bracket avoids the reliance of end grain fixing, which can cause splitting and consequential damp penetration issues.

Quality

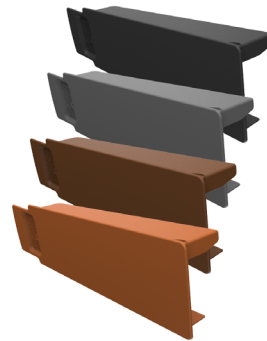
- Helping to meet BS 5534 Code of practice for slating and tiling.
- Complies with all other relevant regulations and standards.
- Manufactured to BS EN ISO 9001 and BS EN ISO 14001.
- Independently tested and complies with BS8612.

Material & Colour

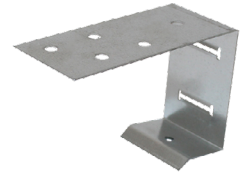
- UV protected and colour fast polypropylene.
- Galvanised steel batten end bracket (optional).
- Available in grey, terracotta, brown and black.

Products in the System

- Thin Leading Edge Verge (LH).
- Thin Leading Edge Verge (RH).
- Thin Leading Edge Eaves Starter (LH).
- Thin Leading Edge Eaves Starter (RH).
- Half Round Ridge (apex) End Cap.
- Angled Ridge (apex) End Cap.
- End Grain Batten Bracket (optional).



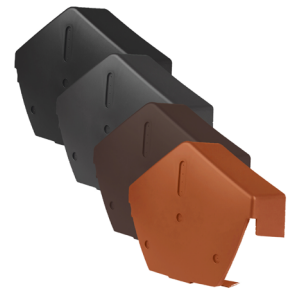
Thin Leading Edge Tile Dry Verge Piece (LH)



End Grain Batten Bracket



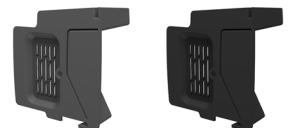
Universal Dry Fix Half Round Ridge End Cap



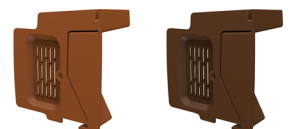
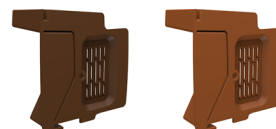
Universal Dry Fix Angled Ridge End Cap



Thin Leading Edge Eaves Starter (LH)



Thin Leading Edge Eaves Starter (RH)



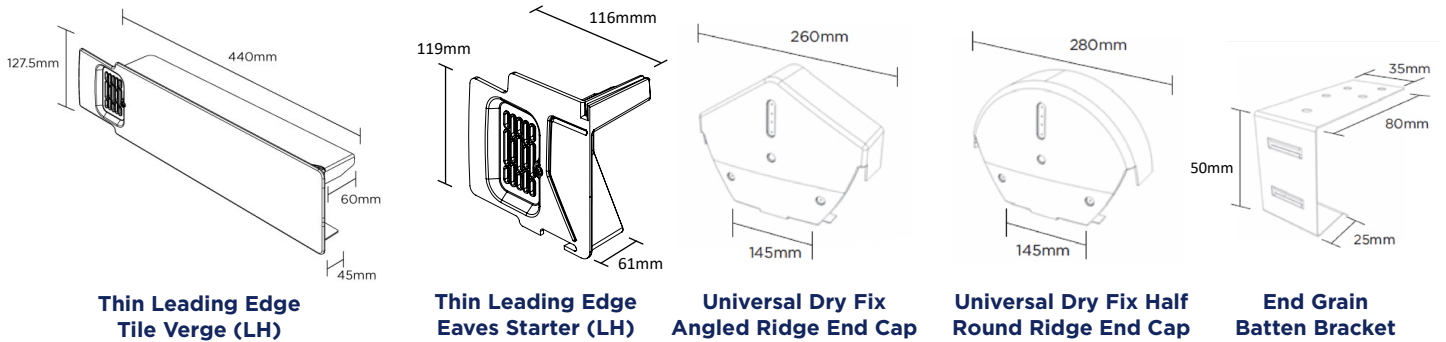
How to Order

- Select the relevant verge system colour for the project.
- 1 verge piece is required for each roof tile in the sloping run.
- Select the ridge shape for the apex of the system – angled or round.
- Eaves starter must be installed at the beginning of each sloping run.
- 1 optional end grain batten bracket is required for each verge piece installed in the sloping run.

Installation Advice

- Please refer to timloc.co.uk for full recommended installation guidance

Product Dimensions



Thin Leading Edge Tile Verge (LH)

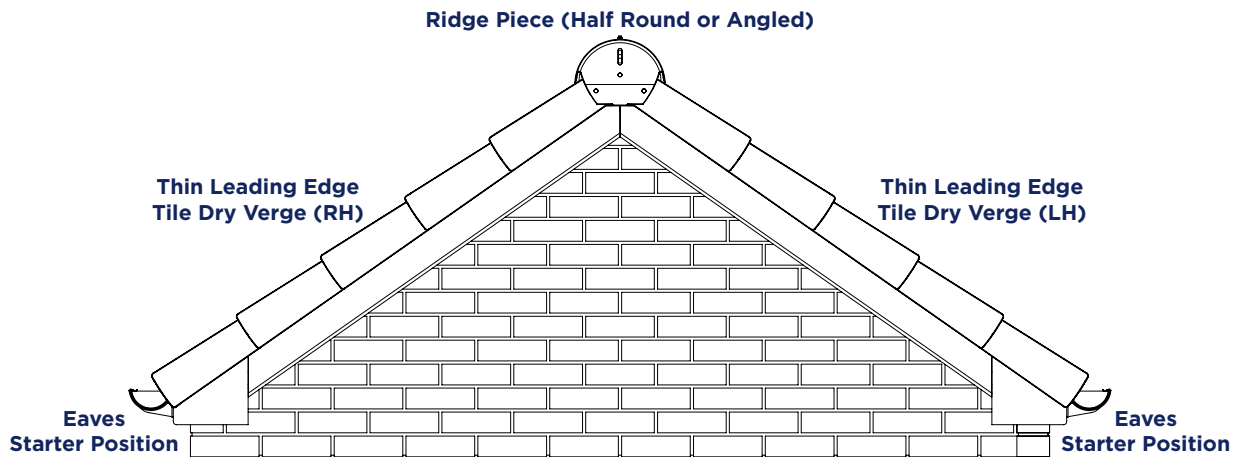
Thin Leading Edge Eaves Starter (LH)

Universal Dry Fix Angled Ridge End Cap

Universal Dry Fix Round Ridge End Cap

End Grain Batten Bracket

Product Detail



Product Codes

Description	Pack Qty	Grey Product Codes	Brown Product Codes	Black Product Codes	Terracotta Product Codes	Lead Time
Thin Leading Edge Verge (LH)	20	99158	99160	99157	99159	Next Working Day
Thin Leading Edge Verge (RH)	20	99162	99164	99161	99163	Next Working Day
Thin Leading Edge Verge Starter (LH)	10	99166	99168	99165	99167	Next Working Day
Thin Leading Edge Verge Starter (RH)	10	99170	99172	99169	99171	Next Working Day
Universal dry fix angled ridge end cap	10	99109	99108	99107	99110	Next Working Day
Universal dry fix half round ridge end cap	10	99113	99112	99136	99114	Next Working Day
Dry verge profiled tile end grain batten bracket (optional)	20	99124	99124	99124	99124	Next Working Day

Environmental Product Declaration

A quantification of environmental information regarding the life cycle of the Thin Leading Edge Dry Verge. GWP total is for production stages A1-A3. Verified in accordance with ISO 14025. View the full EPD at timloc.co.uk.

Product	EPD Reference	EPD Mass (KG)	GWP A1-A3 (KG CO ₂ e)
Verge unit	EPD HUB, HUB-2425	0.24	1.05E-01
Starter	EPD HUB, HUB-2425	0.062	2.72E-02
Half Round Ridge End Cap	EPD HUB, HUB-2425	0.255	1.12E-01
Angled Ridge End Cap	EPD HUB, HUB-2425	0.255	1.12E-01