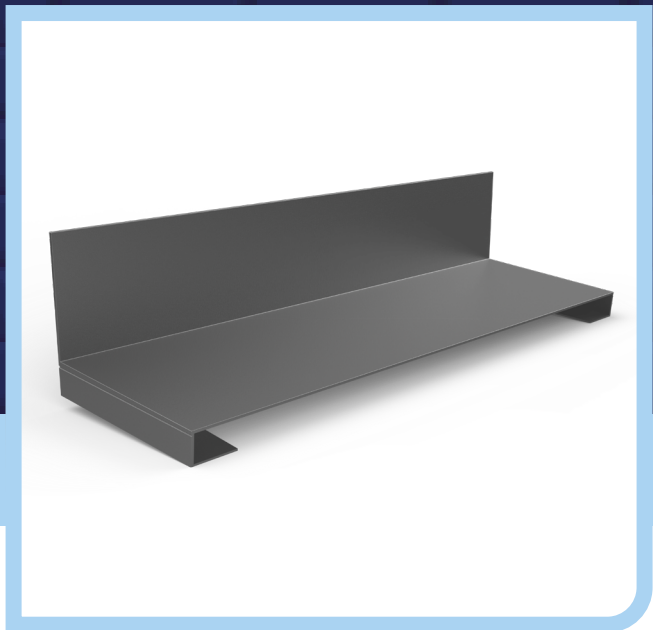




# AMBI-SOAKER | THIN LEADING EDGE DATASHEET

## Ambi-Soaker Universal Dry Fix Abutment Soaker for Large Format Thin Leading Edge Tiles



### Use

- Thin Leading Edge Tiles.
- Abutments between a pitched roof and a wall.
- New build or refurbishment projects.

### Features & Benefits

- Pre-formed product shape saves cost and labour time compared to site-fabricated soakers.
- Patented design provides a universal product with fixing tabs for both LH or RH Installations.
- Fixing tabs can be trimmed away as required.
- Sits underneath abutment flashing material. Compatible with stepped or continuous flashings.
- Protects roof abutment areas from rain and weather.
- Long lasting, reliable and virtually maintenance free.
- Lightweight product allows easy handling and installation.
- Simple and clean mortar-free installation process.
- Helps to minimise contamination of water course compared to lead soakers.
- Reduced lead usage within the build helping to deter theft.
- Resistant to UV light and acid rain.

### Quality

- Manufactured to BS EN ISO 9001 and BS EN ISO14001.
- Complies with all relevant sections of the Building Regulations.
- Satisfies all relevant NHBC requirements.

### Material & Colour

- UV protected and colour-fast polypropylene.
- Available in Grey only.

### Compatibility

Most Thin Leading Edge large format tiles from major manufacturers including:

- Marley Edgemere
- Redland Richmond
- Sandtoft TLE
- Russell Galloway
- Lagan Elite

\*Maximum compatible tile thickness = 17mm

### Product Codes

Description	Colour	Pack Quantity	Lead Time	Product Codes
Ambi-Soaker for Thin Leading Edge	Grey	50	Next Working Day	AS-TLE

### How to Order

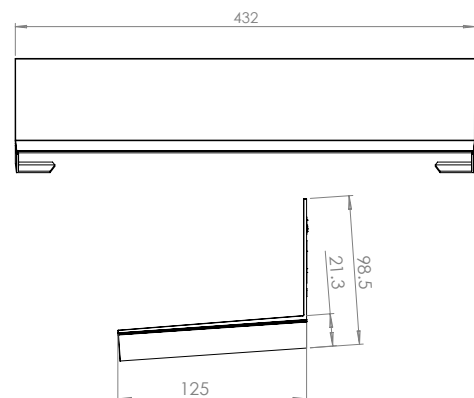
- Ambi-Soakers are fitted one unit per tile for the entire length of the abutment. Check the pack quantity against the number of tiles in the run to ensure you have enough Ambi-Soaker units.

### Environmental Product Declaration

A quantification of environmental information regarding the life cycle of the Ambi-Soaker - Thin Leading Edge. GWP total is for production stages A1-A3. Verified in accordance with ISO 14025. View the full EPD at [timloc.co.uk](http://timloc.co.uk).

EPD Reference	EPD Mass (KG)	GWP A1-A3 (KG CO <sub>2</sub> e)
EPD HUB, HUB-2425	0.199	8.72E-02

### Product Dimensions



### Installation Advice

- Please refer to [timloc.co.uk](http://timloc.co.uk) for recommended installation guidance