

## RTV-ADHS | Hooded Slate Vent Adapter

Stepped duct adapter for the Timloc Hooded Slate Vent

### Uses

- To provide Timloc Hooded Slate Vents with a 110/125/150/170mm ventilation duct or soil vent pipe connection

### Features and Benefits

- Compatible with the Timloc Hooded Slate Vent RTV-HS
- Simply click into position to secure the adapter to the tile vent
- The joint between the adapter and the slate vent must be fully sealed with silicon sealant or a similar watertight adhesive.
- Provides a precise fit to 110/125/150/170mm ventilation duct or soil vent pipe
- Simply cut along the indented line at your chosen duct size. No cutting is required for 110mm size.
- Where required the roof battens may need to be trimmed to allow the adapter to pass through the roof surface into the property

### Relevant Standards

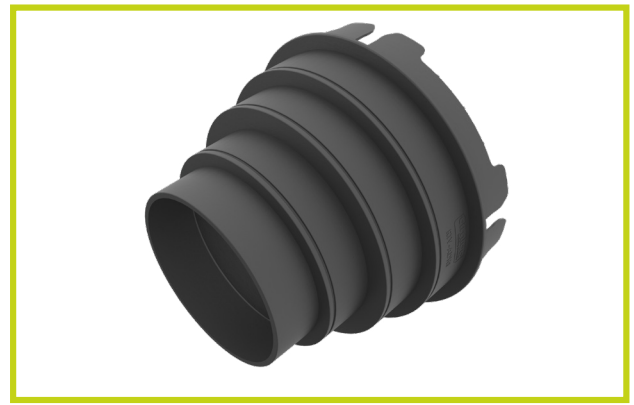
- BS 5250: 2021 Management of moisture in buildings – Code of practice
- Manufactured to BS EN ISO 9001:2015 and BS EN ISO 14001:2015
- Complies with all relevant Building Regulations 2010
- Satisfies all NHBC requirements

### Material and Colour

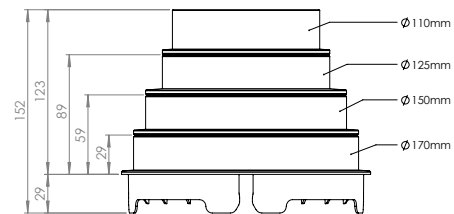
- Injection moulded Polypropylene
- Available in Black only

### Product Codes

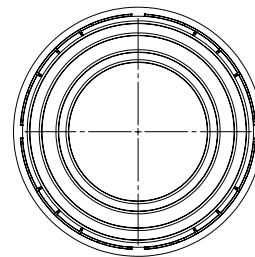
Description	Colour	Weight	Box Qty	Product Code
Hooded Slate Vent Adapter	Black	0.22kg	10	RTV-ADHS



### Product Dimensions



Side Profile



Top Profile

### Accessories

- RTV-ADHS is also compatible with other Timloc accessories



Multi Adapter **RTV-ADMULTI**



110mm Flexi-Pipe **RTV-KIT1**