

## RTV-IP | Interlocking Plain Roof Tile Vent

Interlocking Plain roof tile vent to enable ventilation directly into a roof space or connect to a ducted ventilation system

### Uses

- On roofs with Interlocking Plain profile roof tiles
- Enables ventilation directly into a roof space
- Can also be connected to a ducted ventilation system inside the building

### Features and Benefits

- Suitable for roofs with a minimum pitch of 22.5°
- Free ventilation area of 6,000mm<sup>2</sup>
- Sized to replace one Interlocking Plain tile to provide a continuous visual appearance along the roof when viewed at all levels
- Shaped to manage and channel rainwater back down onto the roof tiles and away from the vent opening
- 4mm spaced external grille to prevent rainwater ingress and keep out large insects, vermin and debris
- UV stabilised top for continuous exposure to sunlight
- Lightweight and easy to handle

### Relevant Standards

- BS EN 490:2011 Concrete roofing tiles and fittings for roof covering and wall cladding - product specifications (+A1:2017)
- BS 5250: 2021 Management of moisture in buildings – Code of practice
- BS 5534:2014 Slating and tiling for pitched roofs and vertical cladding – code of practice (+A2:2018)
- Manufactured to BS EN ISO 9001:2015 and BS EN ISO 14001:2015
- Complies with all relevant sections of the Building Regulations 2010
- Satisfies all relevant NHBC requirements

### Compatibility

Interlocking Plain tiles from all major manufacturers including:

- Marley Ashmore
- Redland Duoplain
- Forticrete Gemini

### Product Codes

Product Description	Colour	Weight	Box Quantity	Product Code	Pack Quantity	Pack Code	Pallet Quantity
Interlocking Plain Roof Tile Vent	Terracotta	0.59kg	1	RTV-IPTE	12	RTVMULTI-IPTE	204
Interlocking Plain Roof Tile Vent	Brown	0.59kg	1	RTV-IPBR	12	RTVMULTI-IPBR	204
Interlocking Plain Roof Tile Vent	Grey	0.59kg	1	RTV-IPGR	12	RTVMULTI-IPGR	204
Interlocking Plain Roof Tile Vent	Red	0.59kg	1	RTV-IPRD	12	RTVMULTI-IPRD	204

### Accessories

- The 110mm Flexipipe (RTV-KIT1) can be used to aid connection to ventilation duct or soil vent pipe
- The plain adapter (RTV-ADP) can be used to attach the roof tile vent to 110mm ductwork
- Can be connected to 100/110/125/150mm duct sizes when combined with the multi adapter (RTV-ADMULTI)
- RTV-ADP and RTV-KIT1 available as one kit (RTV-KIT3). See 110mm Flexi-Pipe Kits datasheet



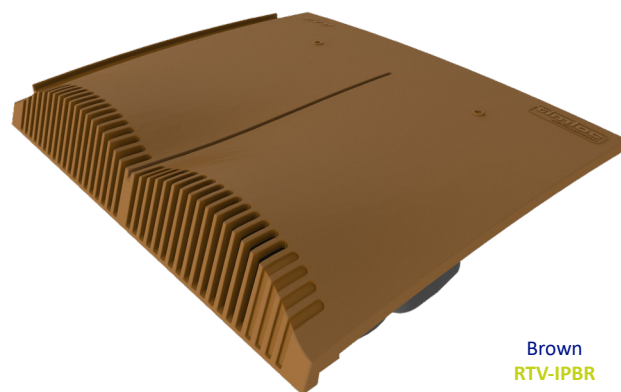
Plain Adapter **RTV-ADP**



Multi Adapter **RTV-ADMULTI**



110mm Flexipipe **RTV-KIT1**



Brown  
**RTV-IPBR**



Terracotta  
**RTV-IPTE**

Brown  
**RTV-IPBR**

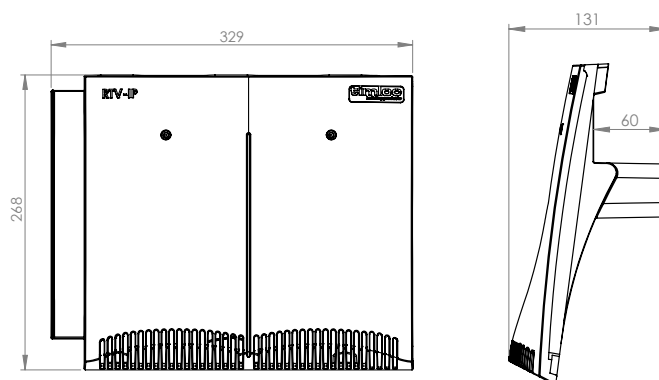
Grey  
**RTV-IPGR**

Red  
**RTV-IPRD**

### Material and Colour Choice

- Top - UV stabilised coloured injection moulded Polypropylene with textured finish
- Available in Terracotta, Brown, Grey and Red
- Base – Black injection moulded Polypropylene

### Product Dimensions



Top Profile

Side Profile

**NB.** RTV-IP available in single, pack or pallet quantities. For pack quantities, 12 tile vent assemblies are packaged in one large box.