

RTV-FE | Flat Edge Roof Tile Vent

Profiled roof tile vent to enable ventilation directly into a roof space or connect to a ducted ventilation system

Uses

- On roofs with Flat Edge profile roof tiles
- Enables ventilation directly into a roof space
- Can also be connected to a ducted ventilation system inside the building

Features and Benefits

- Suitable for roofs with a minimum pitch of 20°
- Free ventilation area of 10,000mm²
- Sized to replace one Flat Edge tile to provide a continuous visual appearance along the roof when viewed at all levels
- Shaped to manage and channel rainwater back down onto the roof tiles and away from the vent opening
- 4mm spaced external grille to prevent rainwater ingress and keep out large insects, vermin and debris
- Integrated clips to ensure a secure fit to surrounding roof tiles
- UV stabilised top for continuous exposure to sunlight
- Lightweight and easy to handle

Relevant Standards

- BS EN 490:2011 Concrete roofing tiles and fittings for roof covering and wall cladding - product specifications (+A1:2017)
- BS 5250: 2021 Management of moisture in buildings – Code of practice
- BS 5534:2014 Slating and tiling for pitched roofs and vertical cladding – code of practice (+A2:2018)
- Manufactured to BS EN ISO 9001:2015 and BS EN ISO 14001:2015
- Complies with all relevant sections of the Building Regulations 2010
- Satisfies all relevant NHBC requirements

Compatibility

Flat Edge large format tiles from all major manufacturers including:

- Sandtoft Calderdale Edge

Product Codes

Product Description	Colour	Weight	Box Quantity	Product Code	Pack Quantity	Pack Code	Pallet Quantity
Flat Edge Roof Tile Vent	Terracotta	0.83kg	1	RTV-FETE	8	RTVMULTI-FETE	136
Flat Edge Roof Tile Vent	Brown	0.83kg	1	RTV-FEBR	8	RTVMULTI-FEBR	136
Flat Edge Roof Tile Vent	Grey	0.83kg	1	RTV-FEGR	8	RTVMULTI-FEGR	136
Flat Edge Roof Tile Vent	Red	0.83kg	1	RTV-FERD	8	RTVMULTI-FERD	136
Flat Edge Roof Tile Vent	Black	0.83kg	1	RTV-FEBL	8	RTVMULTI-FEBL	136

Accessories

- The 110mm Flexi-Pipe (RTV-KIT1) can be used to aid connection to ventilation duct or soil vent pipe
- The standard adapter (RTV-ADS) can be used to attach the roof tile vent to 110mm ductwork
- Can be connected to 100/110/125/150mm duct sizes when combined with the multi adapter (RTV-ADMULTI)
- RTV-ADS and RTV-KIT1 available as one kit (RTV-KIT2). See 110mm Flexi-Pipe Kits datasheet



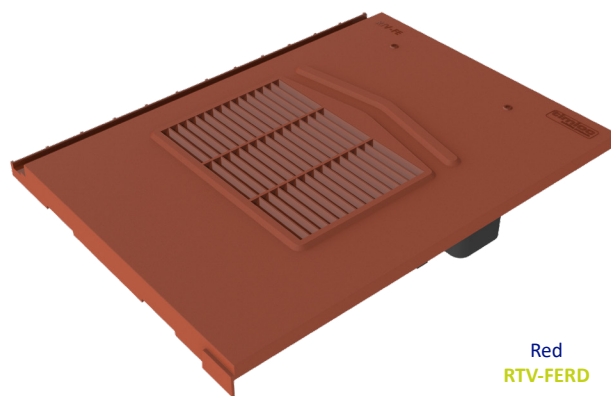
Standard Adapter **RTV-ADS**



Multi Adapter **RTV-ADMULTI**



110mm Flexi-Pipe **RTV-KIT1**



Red
RTV-FERD



Terracotta
RTV-FETE



Brown
RTV-FEBR



Grey
RTV-FEGR

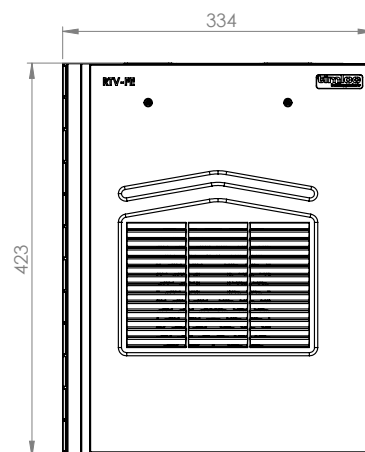


Black
RTV-FEBL

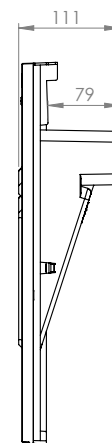
Material and Colour Choice

- Top - UV stabilised coloured injection moulded Polypropylene with textured finish
- Available in Terracotta, Brown, Grey, Red and Black
- Base – Black injection moulded Polypropylene

Product Dimensions



Top Profile



Side Profile

NB. RTV-FE available in single, pack or pallet quantities. For pack quantities, 8 tile vent assemblies are packaged in one large box.