

# INVENTIVE

## Roof ventilation solutions

### RTV-SP | Single Pantile Tile Vent

# DATASHEET

**Profiled roof tile vent to enable ventilation directly into a roof space or connect to a ducted ventilation system**

#### Use

- On roofs with Single Pantile profile roof tiles
- Enables ventilation directly into a roof space
- Can also be connected to a ducted ventilation system inside the building

#### Features & Benefits

- Suitable for roofs with a minimum pitch of 20°
- Free ventilation area of 5,000mm<sup>2</sup>
- Sized to replace one Single Pantile tile to provide a continuous visual appearance along the roof when viewed at all levels
- Shaped to manage and channel rainwater back down onto the roof tiles and away from the vent opening
- Provides a 110mm duct connection as standard
- 4mm spaced external grille to prevent rainwater ingress and keep out large insects, vermin and debris
- Integrated clips to ensure a secure fit to surrounding roof tiles
- UV stabilised top for continuous exposure to sunlight
- Lightweight and easy to handle

#### Quality

- Independently tested by BRE for deluge and wind driven rain to PD CEN/TR15601:2012
- BS EN 490:2011 Concrete roofing tiles and fittings for roof covering and wall cladding - product specifications (+A1:2017)
- BS 5250: 2021 Management of moisture in buildings - Code of practice
- BS 5534:2014 Slating and tiling for pitched roofs and vertical cladding - code of practice (+A2:2018)
- Manufactured to BS EN ISO 9001:2015 and BS EN ISO 14001:2015
- Complies with all relevant sections of the Building Regulations 2010
- Satisfies all relevant NHBC requirements

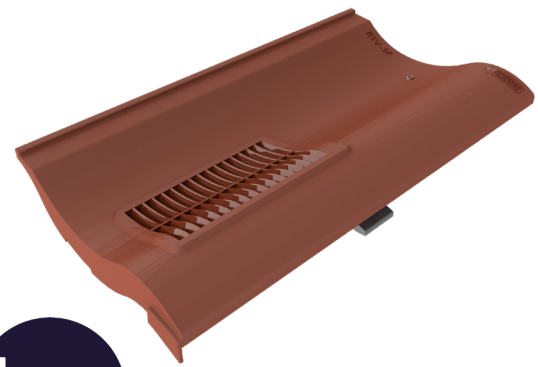
#### Compatibility

Single Pantile small format tiles from all major manufacturers including:

- Marley Anglia
- Redland Fenland Pantile
- Sandtoft Shire

#### Material & Colour

- Top - UV stabilised coloured injection moulded Polypropylene with textured finish
- Available in Terracotta, Brown, Grey and Red
- Base - Black injection moulded Polypropylene



Red  
RTV-SPRD



Terracotta  
RTV-SPTE



Brown  
RTV-SPBR



Grey  
RTV-SPGR



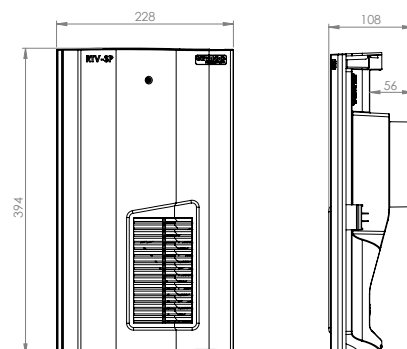
Red  
RTV-SPRD

#### Environmental Product Declaration

A quantification of environmental information regarding the life cycle of the Single Pantile Tile Vent. GWP total is for production stages A1-A3. Verified in accordance with ISO 14025. View the full EPD at [timloc.co.uk](http://timloc.co.uk).



Product	EPD Reference	EPD Mass (KG)	GWP A1-A3 (KG CO <sub>2</sub> e)
RTV-SP	EPD HUB, HUB-2425	0.6214	2.72E-01

#### Product Dimensions



## Compatible Accessories

- Full datasheets available for all accessories

Description	Product Code	Product Image
110mm Flexi-Pipe to aid connection to ventilation duct or soil vent pipe	RTV-KITI	
Multi adapter (RTV-ADMULTI) to aid connection to 100/110/125/150mm duct sizes	RTV-ADMULTI	

## Airflow Test Data

RTV-SP (100mm duct)	
Flow Rate l/s	Static pressure difference Pa
5	3
10	12
15	26
20	45

## Product Codes

Product Description	Colour	Weight	Box Quantity	Product Code	Pack Quantity	Pack Code	Pallet Quantity
Single Pantile Roof Tile Vent	Terracotta	0.62kg	1	RTV-SPTE	11	RTVMULTI-SPTE	187
Single Pantile Roof Tile Vent	Brown	0.62kg	1	RTV-SPBR	11	RTVMULTI-SPBR	187
Single Pantile Roof Tile Vent	Grey	0.62kg	1	RTV-SPGR	11	RTVMULTI-SPGR	187
Single Pantile Roof Tile Vent	Red	0.62kg	1	RTV-SPRD	11	RTVMULTI-SPRD	187

**NB.** RTV-SP available in single, pack or pallet quantities. For pack quantities, 14 tile vent assemblies are packaged in one large box.