

INVENTIVE

Roof ventilation solutions

RTV-DR|Double Roman Tile Vent

DATASHEET

Profiled roof tile vent to enable ventilation directly into a roof space or connect to a ducted ventilation system

Use

- On roofs with Double Roman profile roof tiles
- Enables ventilation directly into a roof space
- Can also be connected to a ducted ventilation system inside the building

Features & Benefits

- Suitable for roofs with a minimum pitch of 20°
- Free ventilation area of 10,000mm²
- Sized to replace one Double Roman tile to provide a continuous visual appearance along the roof when viewed at all levels
- Shaped to manage and channel rainwater back down onto the roof tiles and away from the vent opening
- 4mm spaced external grille to prevent rainwater ingress and keep out large insects, vermin and debris
- Integrated clips to ensure a secure fit to surrounding roof tiles
- UV stabilised top for continuous exposure to sunlight
- Lightweight and easy to handle

Quality

- Independently tested by BRE for deluge and wind driven rain to PD CEN/TR15601:2012
- BS EN 490:2011 Concrete roofing tiles and fittings for roof covering and wall cladding - product specifications (+A1:2017)
- BS 5250: 2021 Management of moisture in buildings - Code of practice
- BS 5534:2014 Slating and tiling for pitched roofs and vertical cladding - code of practice (+A2:2018)
- Manufactured to BS EN ISO 9001:2015 and BS EN ISO 14001:2015
- Complies with all relevant sections of the Building Regulations 2010
- Satisfies all relevant NHBC requirements

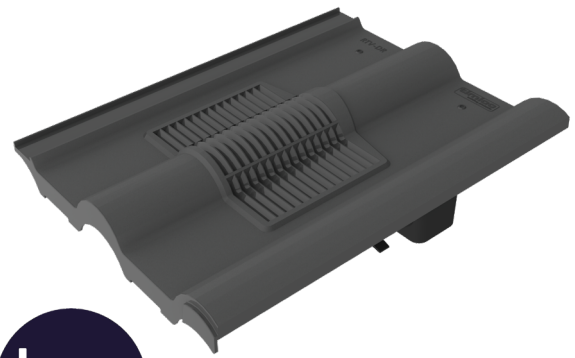
Compatibility

Double Roman large format tiles from all major manufacturers including:

- Marley Double Roman
- Sandtoft Double Roman
- Redland 50 Double Roman
- Lagan Double Roll
- Russell Double Roman
- FP McCann Double Roman

Material & Colour

- Available in Terracotta, Brown, Grey and Red
- Top - UV stabilised coloured injection moulded Polypropylene with textured finish
- Base - Black injection moulded Polypropylene



Grey
RTV-DRGR



Terracotta
RTV-DRTE



Brown
RTV-DRBR



Grey
RTV-DRGR



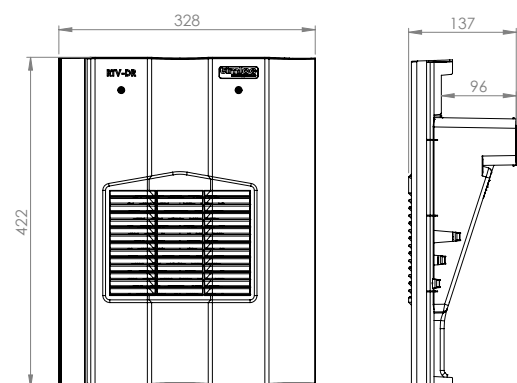
Red
RTV-DRRD

Environmental Product Declaration

A quantification of environmental information regarding the life cycle of the Double Roman Tile Vent. GWP total is for production stages A1-A3. Verified in accordance with ISO 14025. View the full EPD at timloc.co.uk.


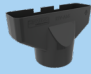

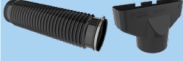
Product	EPD Reference	EPD Mass (KG)	GWP A1-A3 (KG CO ₂ e)
RTV-DR	EPD HUB, HUB-2425	0.884	3.87E-01

Product Dimensions



Compatible Accessories

- Full datasheets available for all accessories

Description	Product Code	Product Image
110mm Flexi-Pipe to aid connection to ventilation duct or soil vent pipe	RTV-KIT1	
Standard adapter to attach the roof tile vent to 110mm ductwork	RTV-ADS	
Multi adapter (RTV-ADMULTI) to aid connection to 100/110/125/150mm duct sizes	RTV-ADMULTI	
RTV-KIT1 and RTV-ADS available as one kit	RTV-KIT2	

Airflow Test Data

RTV-DR (100mm duct)	
Flow Rate l/s	Static pressure difference Pa
10	2
20	8
30	17
40	30

Product Codes

Product Description	Colour	Weight	Box Quantity	Product Code	Pack Quantity	Pack Code	Pallet Quantity
Double Roman Roof Tile Vent	Terracotta	0.88kg	1	RTV-DRTE	6	RTVMULTI-DRTE	102
Double Roman Roof Tile Vent	Brown	0.88kg	1	RTV-DRBR	6	RTVMULTI-DRBR	102
Double Roman Roof Tile Vent	Grey	0.88kg	1	RTV-DRGR	6	RTVMULTI-DRGR	102
Double Roman Roof Tile Vent	Red	0.88kg	1	RTV-DRRD	6	RTVMULTI-DRRD	102

NB. RTV-DR available in single, pack or pallet quantities. For pack quantities, 6 tile vent assemblies are packaged in one large box.