



INSTALLATION ADVICE

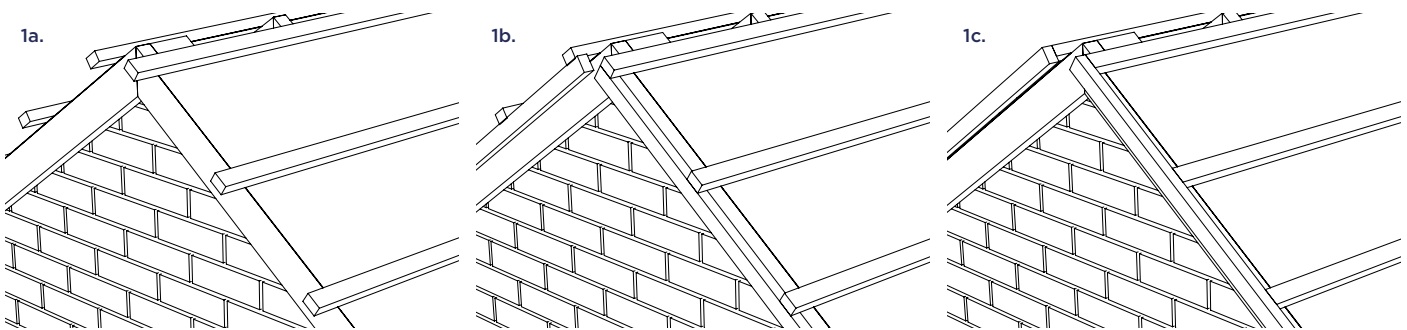
Universal dry fix verge system for profiled roof tiles



- Helping to meet BS 5534 Code of practice for slating and tiling
- Manufactured to BS EN ISO 9001 and BS EN ISO 14001
- Complies with all relevant Building Regulations
- Independently tested and complies with BS8612

Mechanically fixed dry verge system for profiled tiles that provides a robust, attractive, and weather-protective alternative to wet mortar bedding.

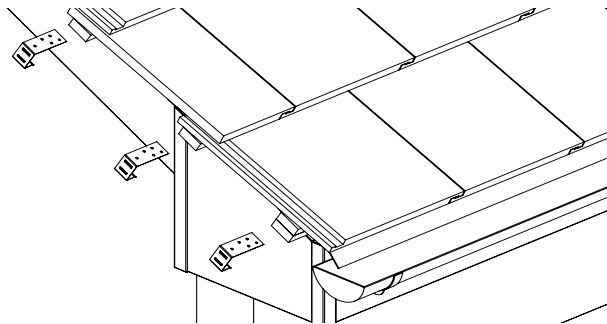
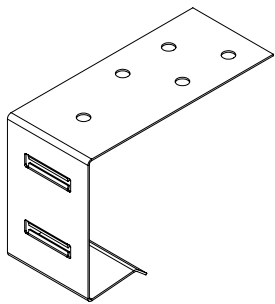
Please read these instructions carefully before starting work. We recommend that installation and preparations are carried out by a competent tradesperson.



1.

Prepare the tile batten ends along the verge. Timloc recommends using counter battens to avoid fixing directly into the tile batten end grain.

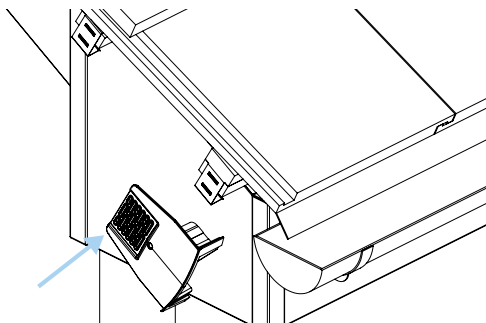
- a. If fixing directly to the tile batten ends allow a 50mm overhang.
- b. If fitting counter battens under the tile battens allow a 50mm overhang.
- c. If fitting counter battens onto the ends of the tile battens allow a 25mm overhang to the tile battens to give a 50mm total overhang.



2.

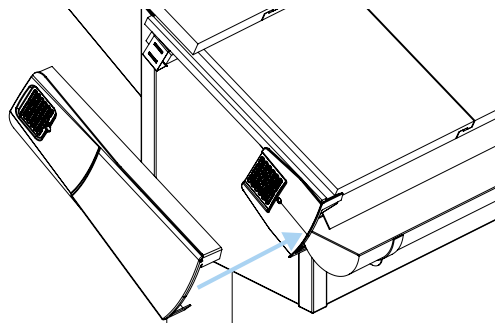
As an alternative to direct end grain fixing, Timloc recommend using the optional end grain batten brackets (product code 99124) to provide a more secure fix:

- a. For end grain batten fixing - Position a bracket at the end of each tile batten and fasten with nails through two of the fixing holes.
- b. For an under counter batten - Clip the bracket over the tile and counter batten. Nail the bracket to the top of the tile batten and the underside of the counter batten, through the fixing holes.
- c. For an end counter batten - Clip the bracket over the tile and counter battens. Nail fix the first hole into the counter batten then fix two more nails through the other holes into the tile batten.



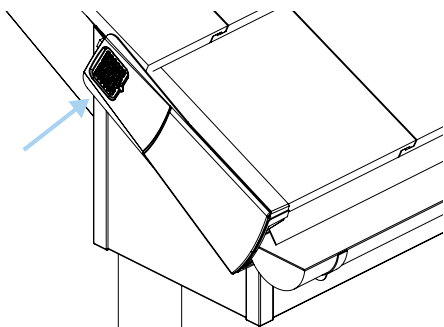
3.

Position the starter at the bottom corner of the eaves tile so that the front edge lines up flush with the end of the first tile then nail it to the batten through the fixing slots. If required use one of the main unit pieces to help align the starter with the first tile.



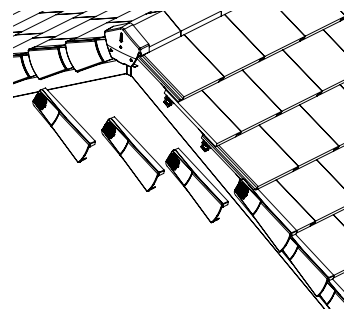
4.

To fix the first verge unit at eaves level, clip the verge unit into the starter on both sides. The side wall of the verge must sit flush on the top face of the first tile and slide in between the subsequent tiles.



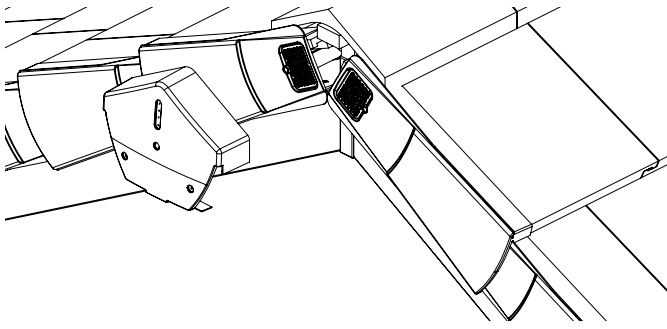
5.

Nail the top of the verge unit into position through one of the fixing slots into the batten and through the end grain batten bracket if also being used.



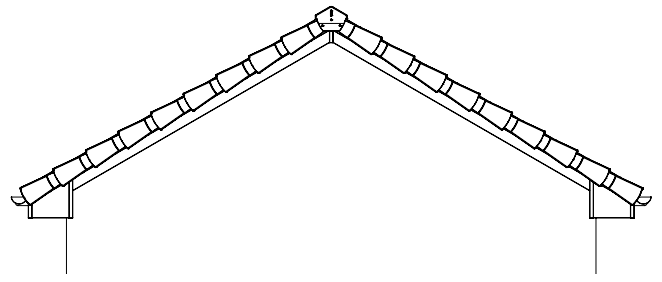
6.

Fit subsequent verge units over the tabs of the previous unit and push them up the roof until they sit onto the front edge of each tile. Then nail each verge unit into place through the fixing slots. Continue to install verge units at each course ensuring that all units are fully fitted over the tiles. Some applications may require the top verge units to be mitre cut to ensure a flush fit.



7.

To complete the installation fit a ridge cap over the ridge tile and left and right verge units. Fix the cap in place with screws through the centre recesses and into the ridge board. The outer edges of the ridge cap can be flexed or trimmed to length to allow a closer fit to the top course of the verge units if required.



8.

Once the installation is complete check that all verge units, starters and ridge caps are fitted securely.

Scan or click to view product datasheet

