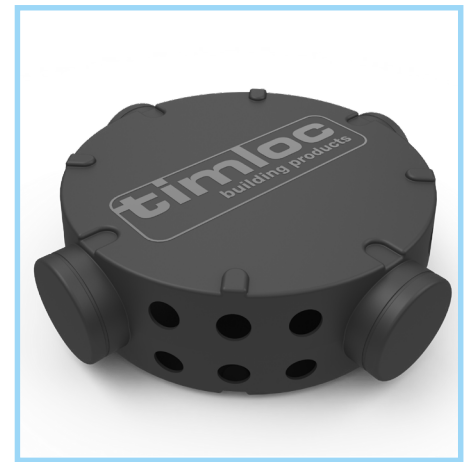


# Radon Sump

Prefabricated plastic sump for use where sub floor depressurisation is required

## Use

- Where sub floor depressurisation is required under full radon protection.
- The sump is installed beneath the floor slab in non suspended floor applications and vented to atmosphere via a connecting 110mm drainage pipe to an external source and capped off with proprietary products i.e. air bricks & telescopic under floor vents or roof vents.



## Features and Benefits

- Compatible with 110mm drainage pipes.
- Single piece moulding eliminates the need for on-site fabrication preventing errors through poor workmanship.
- Easy to handle and position.
- Tough, durable and puncture resistant.
- Spigot ends can be cut along the indented lines as required to provide extra pipe connections.
- Two or more sumps can be connected with pipework to provide more capacity for larger or more complex groundwork sites with multiple compartments.

## Quality

- Satisfies all NHBC requirements
- Manufactured to BS EN ISO 9001 and BS EN ISO 14001
- Complies with all relevant Building Regulations
- Meets all relevant British Standards
- UK Design Registration Number 6185786

## Material and Colour Choice

- Moulded in 3mm thick medium density polyethylene. Available in black only.

## Installation Advice

- Units will require tape and seal - tape sold separately. Use Gtape01 to make the seal between joint surfaces. Use Gtape02 to seal upper surface to minimise lap lifting if used in concrete floors.

## How to Order

- Order as each
- Timloc can prepare a comprehensive schedule and quotation service if required

## Product Codes

Description	Pack Quantity	Lead Time	Product Code
Radon sump	1	Next Working Day	RSUMP01

## Product Dimensions

