

LOFT-LOC

Loft Door Operating Poles

Metal loft door operating poles for the Timloc range of plastic and metal loft doors

Use

- To enable easy opening of Timloc range of plastic and metal loft doors

Features and benefits

- Robust design
- Manufactured to BS EN ISO 9001-2015
- 600mm in length
- Individually bagged for convenience

Material and colour choice

- Manufactured from zinc plated mild steel tubing
- Z1162 - For use with Timloc Metal Hinged Loft Access Doors
- Z1170 - For use with Timloc Plastic Push-Up or Hinged Loft Access Doors (1168 & 1169)

Dimensions

- Z1162 - 600 x 12 x 75mm
- Z1170 - 600 x 12 x 75mm

How to Order

- Order as each
- State product code

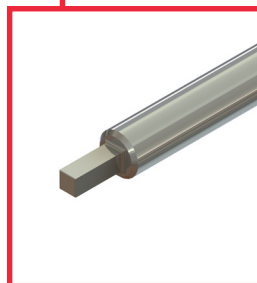
Product Codes

Description

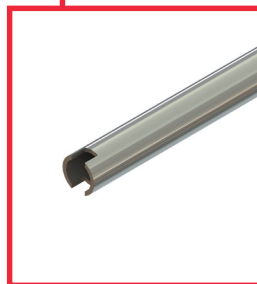
Square T-Key Loft Door Operating Metal Pole
Slotted Loft Door Operating Metal Pole

Product code

Z1162
Z1170



Loft-loc square T-key loft door operating metal pole - Z1162



Loft-loc slotted loft door operating metal pole - Z1170

Dimensions

Z1162



Z1170

