

THERMO-LOC FR30

30-minute fire rated cavity closer

Fire rated barriers for eliminating damp and cold bridging around doors, windows and sills

How to order

- Establish the cavity width and select the correct cavity closer width, or the next size up to ensure the cavity can be closed
- In jamb and sill applications, first estimate the total length of cavity barrier required, then order the correct number of individual 2.4 metre lengths so no joint pieces
- Fixing ties are available for secure fixing if required (particular attention around door openings). Allow for ties fitted at 450mm centres

Technical considerations

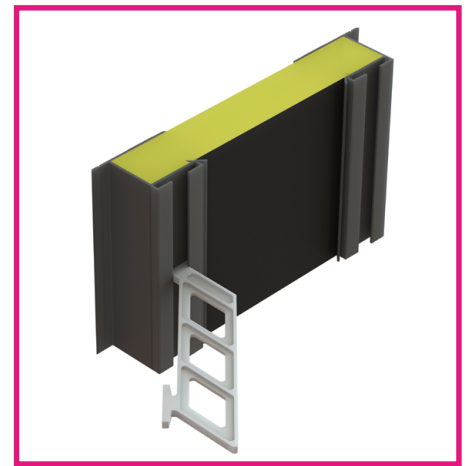
- BRE Document 'Thermal insulation: avoiding risks' and Robust Details stipulate: "When a window or door frame is set back behind the inner face of a dense outer masonry leaf, it should overlap an insulated closer by a minimum of 30mm for BRE exposure zones Sheltered to Severe; but fully rebated (check reveals for zones Very Severe" (see Fig.2)
- With reference to insulation, the products in this range do not use, contain or produce Urea Formaldehyde, CFC's or indeed any of the so called soft CFC's, ie. HCFC's & HFA's. They conform to the Montreal Protocol and have an ozone depletion potential of zero and global warming potential of zero.

Product codes

Thermo-loc 30-minute fire-rated cavity barriers

Product code	Description	Cavity width	Length	Pack quantity	Lead time
CC2.4FR/50	Thermo-loc FR30	50mm	2.4m	10	Next working day
CC2.4FR/65	Thermo-loc FR30	65mm	2.4m	10	Next working day
CC2.4FR/75	Thermo-loc FR30	75mm	2.4m	10	Next working day
CC2.4FR/90	Thermo-loc FR30	90mm	2.4m	10	Next working day
CC2.4FR/100	Thermo-loc FR30	100mm	2.4m	5	Next working day
CC2.4FR/125	Thermo-loc FR30	125mm	2.4m	5	Next working day
CC2.4FR/150	Thermo-loc FR30	150mm	2.4m	3	Next working day
CC2.4FR/160	Thermo-loc FR30	160mm	2.4m	3	7-10 working days
CC2.4FR/170	Thermo-loc FR30	170mm	2.4m	3	7-10 working days
CC2.4FR/180	Thermo-loc FR30	180mm	2.4m	3	7-10 working days
CC2.4FR/190	Thermo-loc FR30	190mm	2.4m	3	7-10 working days
CC2.4FR/200	Thermo-loc FR30	200mm	2.4m	3	7-10 working days
CC2.4FR/210	Thermo-loc FR30	210mm	2.4m	3	7-10 working days
CC2.4FR/220	Thermo-loc FR30	220mm	2.4m	3	7-10 working days
CC2.4FR/230	Thermo-loc FR30	230mm	2.4m	3	7-10 working days
CC2.4FR/240	Thermo-loc FR30	240mm	2.4m	3	7-10 working days
CC2.4FR/250	Thermo-loc FR30	250mm	2.4m	3	7-10 working days
CC2.4FR/260	Thermo-loc FR30	260mm	2.4m	3	7-10 working days
CC2.4FR/270	Thermo-loc FR30	270mm	2.4m	3	7-10 working days
CC2.4FR/280	Thermo-loc FR30	280mm	2.4m	3	7-10 working days
CC2.4FR/290	Thermo-loc FR30	290mm	2.4m	3	7-10 working days
CC2.4FR/300	Thermo-loc FR30	300mm	2.4m	3	7-10 working days
CCFIX	Fixing ties - 100 pack	-	-	100	Next working day

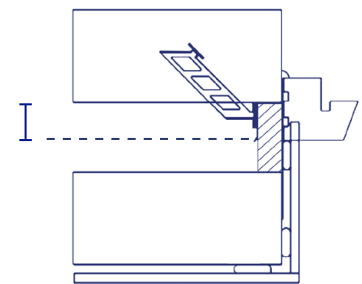
NB. Non standard cavity size to special order



Thermo-loc FR30 Double Profile

Fig. 2

At least 30mm overlap to window frame



Bill of quantity

F30 Accessories/sundry items for brick/block/stone walling
Clause

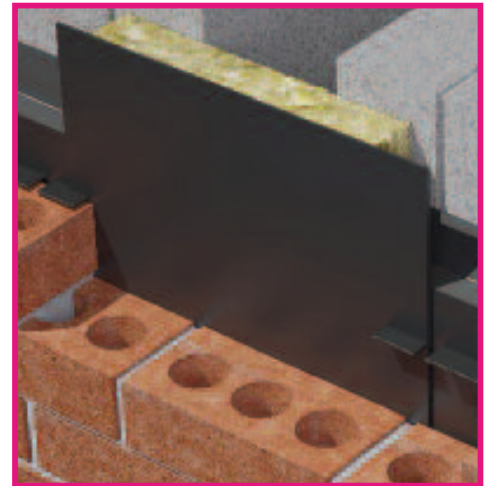
180 | CAVITY CLOSURES FOR CLOSING AROUND WINDOW & DOOR OPENINGS

- To extend not less than 150mm beyond ends of lintels/bridgings.
- Manufacturer: Timloc Building Products, Timloc House, Ozone Park, Howden, East Yorks. DN14 7SD. T: 01405 765 567, W: www.timloc.co.uk
- Reference:.....eg. CC2.4 FR/75 (Thermo-loc FR30, 2.4m, 75mm cavity)
- Accessories: Fixing ties available, 6 No. per 2.4m cavity barrier.

Vertical cavity barrier

Fire-rated acoustic cavity barrier and DPC

Also available to suit cavity widths of up to 300mm



Use

- Effectively reduces the transmission of flanking noise at party wall and external wall junctions
- As a fire stop with integrated DPC

Features and benefits

- The Thermo-loc vertical cavity barrier has been developed to offer vertical protection in minimising flanking noise transmission along the cavity of an external cavity wall at the intersection of a party wall. The product also operates fully as an effective fire barrier and in conjunction with the polythene DPC has no risk of water penetration.
- Where a party wall meets the cavity wall, Building Regulations stipulate the use of a mineral wool closer for sound insulation purposes. The NHBC requires that any such closer is protected by a suitable DPC. The product has been developed to meet these requirements.
- Complies with Building Regulations Part E & B
- Excellent sound insulation properties
- As a fire stop achieves 4 hours (240 minutes) fire integrity to BS 476 Part 20:1987
- Cavity options available
- Self supported by compression fit
- Easily installed

Quality

- Satisfies all NHBC requirements
- Complies with Building Regulations Part E 'Resistance to the passage of sound'
- Complies with Building Regulations Part B 'Internal fire spread (structure)'
- Complies with Robust Details

Material and colour choice

- Manufactured with BS6515 Polythene DPC
- Supplied in 1.2 metre lengths
- Cavity options available
- Rockfibre insulation slab
- 260mm width insulation

