

INVENTIVE

Roof ventilation solutions

4001 | Universal Hooded Slate Vent

DATASHEET

Universal Hooded Slate Vent to enable ventilation directly into a roof space or connect to a ducted ventilation system

Use

- For replacement of one normal roof slate to provide a ventilator
- Ventilating a roof space at low level or high level
- Connection to mechanical extraction from kitchen/bathrooms
- Ventilation outlet for soil vent pipe

Features & Benefits

- Suitable for roofs with a minimum pitch of 22.5°
- Free ventilation area of 10,000mm²
- Suits slate sizes 600mm x 300mm or 500mm x 250mm
- Provides a 110mm duct connection with the optional 4101 pipe adapter kit
- Lightweight and easy to handle
- Inconspicuous low hood protects the internal grille from rainwater

Quality

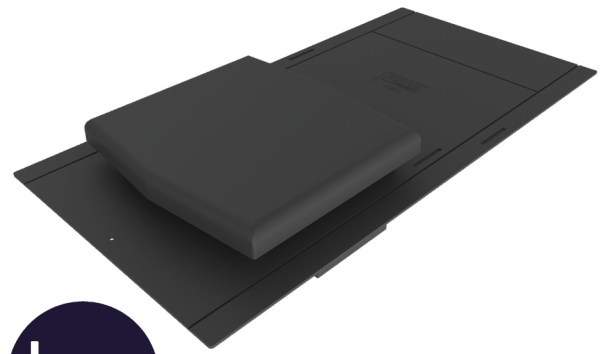
- Independently tested by BRE for deluge and wind driven rain to PD CEN/TR15601:2012
- BS EN 490:2011 Concrete roofing tiles and fittings for roof covering and wall cladding - product specifications (+A1:2017)
- BS 5250: 2021 Management of moisture in buildings - Code of practice
- BS 5534:2014 Slating and tiling for pitched roofs and vertical cladding - code of practice (+A2:2018)
- Manufactured to BS EN ISO 9001:2015 and BS EN ISO 14001:2015
- Complies with all relevant sections of the Building Regulations 2010
- Satisfies all relevant NHBC requirements

Compatibility

Natural or Synthetic slates in sizes 600mm x 300mm or 500mm x 250mm from all major manufacturers.

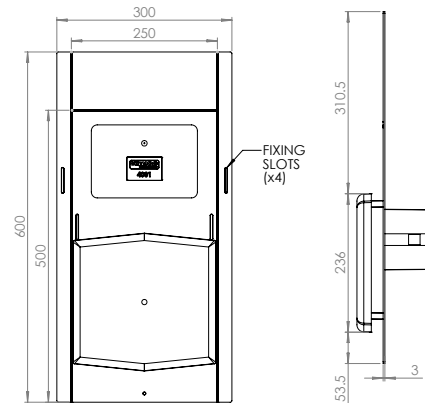
Material & Colour

- Injection moulded Polypropylene
- Available in Black



Black
4001

Product Dimensions



Compatible Accessories

- Full datasheets available for all accessories

Description	Product Code	Product Image
110mm Flexi-Pipe to aid connection to ventilation duct or soil vent pipe	RTV-KIT1	
Pipe Adapter Kit to aid connection to 110mm soil vent pipe or mechanical extractor	4101	
Multi adapter (RTV-ADMULTI) to aid connection to 100/110/125/150mm duct sizes	RTV-ADMULTI	

Environmental Product Declaration

A quantification of environmental information regarding the life cycle of the Universal Hooded Slate Vent and Pipe Adapter. GWP total is for production stages A1-A3. Verified in accordance with ISO 14025. View the full EPD at timloc.co.uk.

Product	EPD Reference	EPD Mass (KG)	GWP A1-A3 (KG CO ₂ e)
4001	EPD HUB, HUB-1836	0.783	1.96E-02
4102	EPD HUB, HUB-1836	0.15	3.75E-03

Airflow Test Data

4001 (100mm duct)	
Flow Rate l/s	Static pressure difference Pa
10	3
20	10
30	21
40	37

Product Codes

Product Description	Colour	Weight	Box Quantity	Product Code	Pallet Quantity
Universal Hooded Slate Vent	Black	0.8kg	5	4001	120
Pipe Adapter Kit	Black	0.5kg	1	4101	N/A
Pipe Adapter Only	Black	0.15kg	1	4102	N/A
Flexible PVC Pipe Only	White	0.3kg	1	4103	N/A