

## TOP HATS & FLEXIBLE TOP HATS

# DATASHEET

**For sealing to a gas barrier and at the intersection of pipe projections**

### Use

- In areas outlined in BRE document 'Radon' guidance on protective measures in new dwellings.
- When gas protection is required across the footprint of the building.
- Crossing cavity wall constructions to maintain gas barrier integrity.
- Forming internal perimeter trays to allow membranes continuity.
- Collars for service pipe protrusions.
- Following a risk assessment where the requirement is for a good gas protection measure against Radon, CO<sub>2</sub>, Methane and Hydrocarbon.
- To be designed and installed in a continuous system around the whole building perimeter.

### Features & Benefits

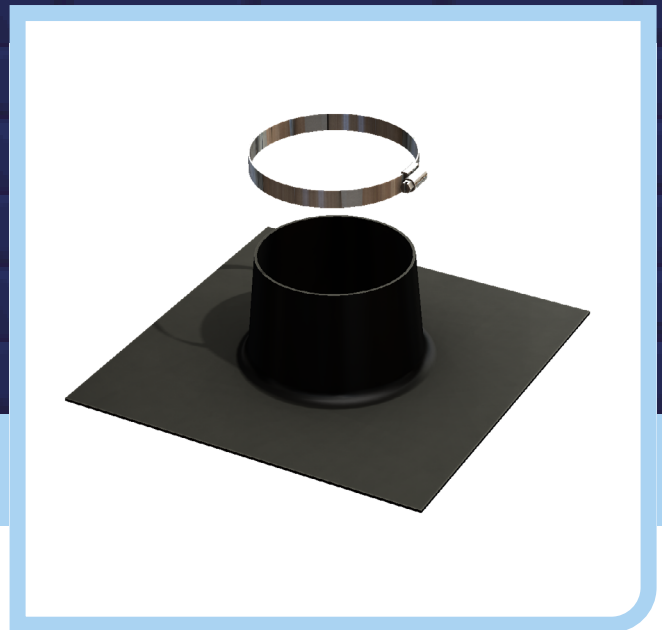
- Preformed mouldings eliminate the need for site fabrication to prevent errors through poor workmanship.
- Easy to handle, flexible, tough, durable and puncture resistant.
- Can be used for multi-storey or high-loading applications - will not extrude under high loads up to the point of compression failure of wall.
- Wide range of standard components with special tailor made accessories also available.
- Fully itemised scheduling service.

### Quality

- Manufactured to BS EN ISO 9001 and BS EN ISO 14001.
- Satisfies all NHBC requirements.
- Meets BRE requirements.
- Complies with Building Regulation Approved Documents C1 and C2.
- Meets all relevant British Standards.

### Material & Colour

- Formed in 2mm medium density polyethylene and/or polypropylene.
- Available in black only.



### Products in the Range

#### Top hat pipe collars (TH055, TH082, TH110, TH135, TH160)

Top hat pipe collars are available in sizes from 55mm to 160mm. A standard range of preformed pipe sleeves that are designed to have sealing tape applied to the unit base to offer a unit for sealing to a gas barrier and at the intersection of pipe projections. Common applications are for soil/service pipes passing vertically via a gas barrier or membrane to maintain a continuous seal. Top hats are suitable for installation at ceiling level for pipe protrusions to assist in reducing air leakage. All jubilee clips are supplied separate to top hat units.

**Jubilee clips size 5 for TH055**

**Jubilee clips size 6 for TH110**

**Jubilee clips size 7 for TH160**

#### Flexible top hat (77110,77135)

The flexible top hat has been designed to be flexible enough to fit around difficult applications and is perfect for use in tight situations where a pipe is located close to a wall

### Environmental Product Declaration

A quantification of environmental information regarding the life cycle of the TH110, TH135 & TH160. GWP total is for production stages A1-A3. Verified in accordance with ISO 14025. View the full EPD at [timloc.co.uk](http://timloc.co.uk).

Product	EPD Reference	EPD Mass (KG)	GWP A1-A3 (KG CO <sub>2</sub> e)
TH110	EPD HUB, HUB-1836	0.175	4.38E-03
TH135	EPD HUB, HUB-1836	0.235	5.88E-03
TH160	EPD HUB, HUB-1836	0.235	5.88E-03

### Installation Advice

Units will require tape and seal - tape sold separately. Use GTAPE01 to make the seal between joint surfaces. Use GTAPE02 to seal upper surface to minimise lap lifting if used in concrete floors.

## Product Codes

Description	Colour	Pack Quantity	Lead Time	Product Codes
Top hat pipe collar 55mm	Black	1	3-5 Working Days	TH055
Top hat pipe collar 82mm	Black	1	3-5 Working Days	TH082
Top hat pipe collar 110mm	Black	1	Next Working Day	TH110
Top hat pipe collar 135mm	Black	1	3-5 Working Days	TH135
Top hat pipe collar 160mm	Black	1	3-5 Working Days	TH160
Jubilee clips size 5, 6 or 7	Black	1	Next Working Day	JCLIP 5, 6 or 7
Flexible top hat pipe collar 110mm diameter	Black	1	Next Working Day	77110
Flexible top hat pipe collar 135mm diameter	Black	1	Next Working Day	77135
Gastite sealing tape 15m x 100mm	Black	-	Next Working Day	GTAPE01
Girth tape 75m x 50mm	Black	-	Next Working Day	GTAPE02