

# OVER FASCIA VENT 300MM DATASHEET

## Durable, multi-purpose ventilator

### Use

- For roof eaves ventilation.
- For flat roof abutment ventilation.
- On roofs where the eaves incorporate a fascia board.
- On roofs which do not incorporate a soffit board, or where an unbroken soffit board is required.

### Features & Benefits

- Very unobtrusive and easy to fit.
- Superior strength construction - will carry the weight of the bottom row of tiles.
- 4mm wide slots comply with BS 5250 : 2021.
- Durable and totally resistant to decay.
- UV stabilised and colourfast.

### Quality

- Satisfies all NHBC requirements.
- Manufactured to BS EN ISO 9001 and BS EN ISO 14001.
- Complies with all relevant Building Regulations.
- Meets all relevant British Standards.

### Material & Colour

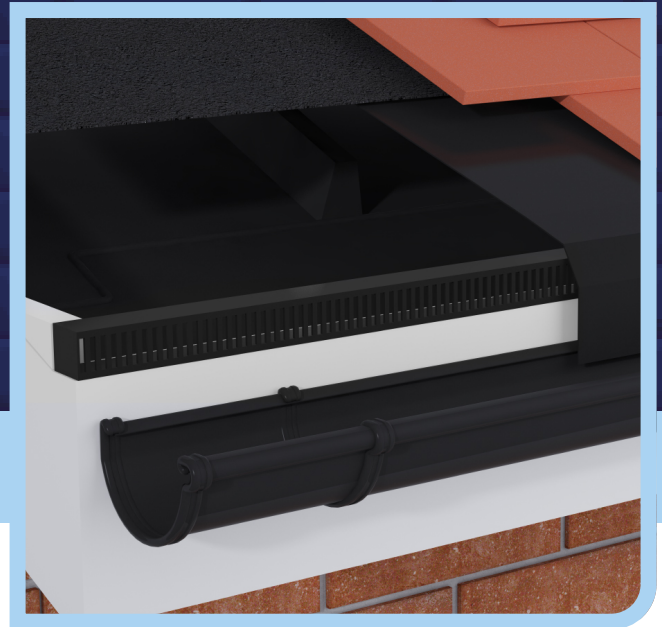
- Manufactured by injection moulding in high density polypropylene.
- Available in black or white.

### Products in the System

- **Over fascia vent - 3011:** Provides ventilation equivalent to a continuous 10mm opening (10,000mm<sup>2</sup> per metre run). Supplied in 300mm lengths.
- **Over fascia vent - 3011-25:** Provides ventilation equivalent to a continuous 25mm opening (25,000mm<sup>2</sup> per metre run). Supplied in 300mm lengths.

### How to Order

- Determine whether the roof design requires ventilation equivalent to a continuous 10mm opening (3011), or 25mm opening (3011-25).
- Specify which colour is preferred.
- Measure the overall length of the eaves to be ventilated and divide by 300mm to determine the number of lengths required.



### Bill of Quantity

#### Over fascia vent 300mm (10mm airflow) G20 Carpentry/Timber Framing/First Fixing

Clause 910\* | EAVES SOFFIT VENTILATION

- Manufacturer: Timloc Building Products, Timloc House, Ozone Park, Howden, East Yorkshire, DN14 7SD. T: 01405 765567 W: www.timloc.co.uk
- Product Reference: 3011
- Type: Over Fascia Ventilator (300mm) 10mm Airflow
- Colour: (Black or White)
- Airway: Provide the equivalent of a continuous opening of not less than 10mm for the full length of eaves.

#### Over fascia vent 300mm (25mm airflow) G20 Carpentry/Timber Framing/First Fixing

Clause 910\* | EAVES SOFFIT VENTILATION

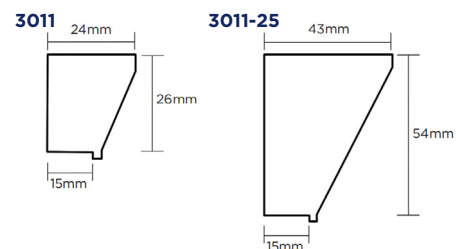
- Manufacturer: Timloc Building Products, Timloc House, Ozone Park, Howden, East Yorkshire, DN14 7SD. T: 01405 765567 W: www.timloc.co.uk
- Product Reference: 3011-25
- Type: Over Fascia Ventilator (300mm) 25mm Airflow
- Colour: (Black or White)
- Airway: Provide the equivalent of a continuous opening of not less than 25mm for the full length of eaves.

### Environmental Product Declaration

A quantification of environmental information regarding the life cycle of the Over Fascia Vents. GWP total is for production stages A1-A3. Verified in accordance with ISO 14025. View the full EPD at timloc.co.uk.

Product	EPD Reference	EPD Mass (KG)	GWP A1-A3 (KG CO2e)
3011	EPD HUB, HUB-2180	0.029	4.06E-02
3011/25	EPD HUB, HUB-2180	0.071	9.94E-02

### Product Dimensions



## Installation Advice

- Use 3011 to ventilate pitched roofs, where the pitch of the roof is 15 degrees or more, and the roof void is attic or loft space
- Use 3011-25 to ventilate pitched roofs, where the pitch of the roof is less than 15 degrees, flat roofs or any roof where living accommodation is contained within the roof space
- Make sure each ventilator is fixed securely into the top of the fascia board using at least three screws or nails per ventilator
- On pitched roofs it is advisable to provide a felt support above the fascia ventilator, projecting at least 10mm beyond the front of the ventilator. This will prevent the felt from sagging behind the fascia board and will maintain a clear air path at the front
- When ventilating flat roof abutments with 3011-25 extra joinery work is essential - please consult the Timloc Technical Department
- Ventilation must be provided for the full length of the eaves and along both sides of the building to create a cross flow ventilation action
- Please see technical section for more details.

## Product Codes

Description	Free Airflow	Length	Colour	Pack Quantity	Lead Time	Product Codes
10mm Over Fascia Vent (300mm)	10,000mm <sup>2</sup> per meter	300mm	Black	10	Next Working Day	3011BL
10mm Over Fascia Vent (300mm)	10,000mm <sup>2</sup> per meter	300mm	White	10	Next Working Day	3011WH
25mm Over Fascia Vent (300mm)	25,000mm <sup>2</sup> per meter	300mm	Black	10	Next Working Day	3011/25BL
25mm Over Fascia Vent (300mm)	25,000mm <sup>2</sup> per meter	300mm	White	10	Next Working Day	3011/25WH