

Platinum +

Cavity closers for eliminating damp and cold bridging around doors, windows and sills

Use

- To close the cavity at external doors, window jambs and sills
- To provide thermal insulation and prevent 'cold bridging'
- To provide a DPC at external doors, window jambs or sills
- Suitable for cavities up to 150mm

Features and Benefits

- Effective DPC and thermal barrier between frame, inner and outer wall leaf
- Thermal conductivity of 0.031W/m²k
- Exceeds the minimum thermal resistance path of 0.45m² K/W stipulated in accredited construction details
- Rigid profile extrusion allows second fix
- Durable and resistant to decay
- Simple on-site trimming to cope with 'rogue' cavity widths
- Global warming potential of less than 5
- Ozone depletion potential of zero
- Available fully rebated - Check reveal (single flange)

Quality

- Manufactured to BS EN ISO 9001 and BS EN ISO 14001
- Complies with Building Regulation Approved Documents C, L1 & L2
- Satisfies BRE document 'Thermal insulation: avoiding risks'
- Meets all relevant British Standards
- Satisfies NHBC standards

Material and Colour Choice

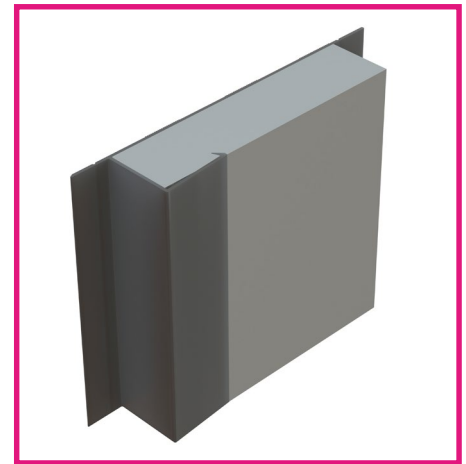
- Rigid profile extruded in UPVC
- Platinum expanded Polystyrene insulation 0.031W/mk
- Multi 100mm, Multi 100mm CR and fixed cavities
- 2.4m lengths

Installation Advice

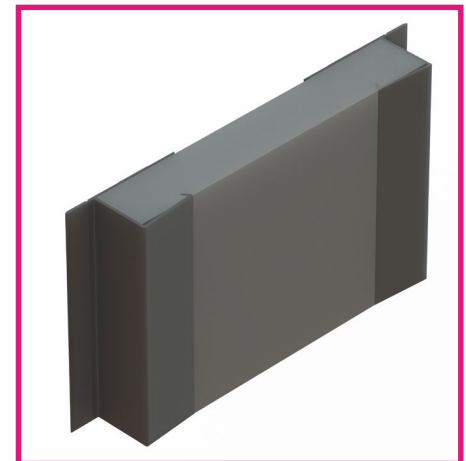
- The accredited construction detail published by DCLG require a minimum overlap of 30mm between the window frame and cavity closer
- Cut into required lengths allowing jamb section to overlap the sill section by cutting away parts of the fixing flange and to butt the underside of the lintel.
- For second fix applications, the cavity closer is pushed into the open cavity after building work is complete. The compressible nature of the exposed insulation material is used to create a friction fit in the cavity, or alternatively the insulation can be trimmed to fit using a sharp knife
- Fixing nails to the flanges are recommended to ensure a secure fit
- Cavity insulation should butt tightly to the cavity closer

How to Order

- Establish the cavity width and select the correct cavity closer width to ensure the cavity can be closed
- In jamb and sill applications, estimate the total length of cavity closer required and order the correct number of 2.4 metre lengths ensuring no joint pieces

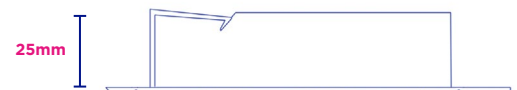


Thermo-loc Platinum + Single Profile



Thermo-loc Platinum + Double Profile

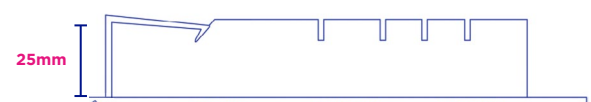
Single Profile | 50mm - 100mm cavities



Double Profile | 105mm - 150mm cavities

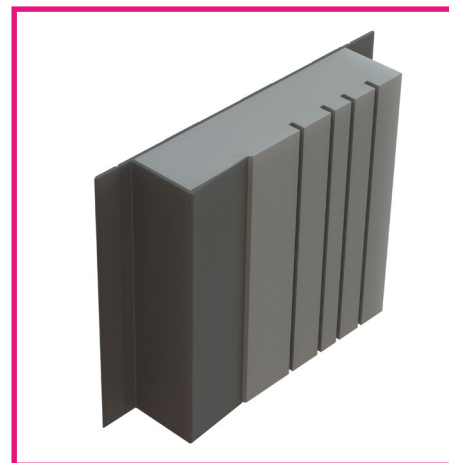


Multi | Check Reveal (single flange)



Platinum +

Cavity closers for eliminating damp and cold bridging around doors, windows and sills



Thermo-loc Platinum + CR Multi

Technical Considerations

- BRE Document 'Thermal insulation: avoiding risks' stipulate "When a window or door frame is set back behind the inner face of a dense outer masonry leaf, it should overlap an insulated closer by a minimum of 30mm for BRE exposure zones Sheltered to Severe; but fully rebated (check reveals) for zones Very Severe"
- With reference to insulation, the products in this range do not use, contain or produce Urea Formaldehyde, CFC's or indeed any of the so called soft CFC's, ie. HCFC's & HFA's. They have an ozone depletion potential of zero and global warming potential of less than 5 and complies with BS EN 13163.

Bill of Quantity

F30 Accessories/sundry items for brick/block/stone walling window jambs and sills
Clause 180 | CAVITY CLOSURES FOR CLOSING AROUND WINDOW & DOOR OPENINGS

- To extend not less than 150mm beyond ends of lintels/bridgings.
- Manufacturer: Timloc Building Products, Ozone Park, Howden, East Yorks. DN14 7SD. T: 01405 765 567 W: www.timloc.co.uk
- Reference: eg.PP2.4/50 (Thermo-loc Platinum Multi, Expanded Polystyrene, 2.4m, 50mm)

Product Codes

Thermo-loc Platinum +

Product code	Description	Cavity width	Length	Pack quantity	Lead time
PP2.4/50	Thermo-loc Platinum +	50mm	2.4m	10	Next working day
PP2.4/75	Thermo-loc Platinum +	75mm	2.4m	10	Next working day
PP2.4/90	Thermo-loc Platinum +	90mm	2.4m	10	Next working day
PP2.4/100	Thermo-loc Platinum +	100mm	2.4m	10	Next working day
PP2.4/100MULTI	Thermo-loc Platinum + Multi	50-100mm	2.4m	10	Next working day
PP2.4/120	Thermo-loc Platinum +	120mm	2.4m	10	Next working day
PP2.4/125	Thermo-loc Platinum +	125mm	2.4m	10	Next working day
PP2.4/130	Thermo-loc Platinum +	130mm	2.4m	10	Next working day
PP2.4/150	Thermo-loc Platinum +	150mm	2.4m	10	Next working day
PP2.4/CR100MULTI	Thermo-loc Platinum + CR Multi	50-100mm	2.4m	10	7-10 working days