

RAD-SEAL

by **timloc**

Recessed radiator pipe guide and seal designed to eliminate potential air leakage and heat loss at vulnerable through wall radiator pipe work entry points

Use

- At the point of entry of through wall 10mm plastic radiator pipework
- Within all wall constructions that present a concealed pipe void including studded dry lined walls and plaster dab solid walls

Features and Benefits

- Contributes to Part L's required air leakage performance
- Air permeability measured and verified by BRE at Part L's 50Pa as:
 - 0.24m³ (h.m²) under positive pressure test conditions
 - 0.30m³ (h.m²) under negative pressure test conditions
- Centrally and neatly contains the pipework during the plastering process
- Protects the pipework and plaster from direct chafing
- Replaces the requirement of electrical back boxes, intumescent foams or sealants
- Straight forward and quick face fix installation
- Projects by just 5mm from the wall
- Securely positions the pipework into the required direction for connection
- Eliminates pipework kinking

Quality

- Manufactured to BS EN ISO 9001 and BS EN ISO 14001
- Helping to meet Building Regulation:
 - Document Part L – Conservation of Fuel and Power
 - Document Part E – Resistance to Sound

Material and Colour Choice

- Main unit body – white Polypropylene
- Gasket seal entry and seals – light grey Thermoplastic Elastomer

Installation Advice

- Mark the centre of the exit hole with a cross on the wall; approximately 350mm above the floor and central to the final radiator position.
- Secure the pipework with pipe clips approximately 50mm above the marked 'X'.
- Cut a hole (86-102mm diameter or 90x90mm square) into the plasterboard. Ensure that the midpoint of the marked 'X' is in the centre.
- Feed the pipework loop through the hole and cut into 2 equal lengths.
- Position the unit over the hole and feed the pipework through until the unit is positioned into the hole.
- Mark the 3 screw hole locations onto the plasterboard and withdraw the unit to allow for the wall plug fixing.
- Feed the unit back on the pipework and offer the unit back into the hole - aligning the fixing points with the wall plug holes.
- Fully secure the unit by fixing 3 screws into the wall plugs.
- Decorators caulk or another suitable sealant may be required around the perimeter of the unit on uneven wall surfaces to achieve air leakage levels.

Product Code

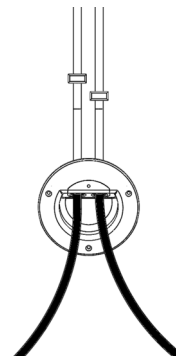
Description	Diameter	Box Quantity	Product Code
Rad-Seal Recessed	140mm	20	1115



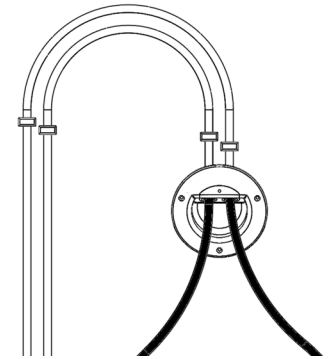
Technical Considerations

Accepts routed pipework from:

a. Ground floor routing



b. Upper floor routing



c. Horizontal routing

