

ROOFLINE

by **timloc**

Over Fascia Ventilation System

Efficient, durable, single product multi-function ventilation system



Use

- For roof eaves ventilation
- On roofs where the eaves incorporate a fascia board
- On roofs which do not incorporate a soffit board or where an unbroken soffit board is required

Features and Benefits

- Provides ventilation equivalent to a continuous 10mm opening (10,000mm² per metre run) and is supplied in 1000mm lengths.
- Efficient, very unobtrusive and easy to fit
- Superior strength construction - will carry the weight of the bottom row of tiles
- Performs several functions in a single product - over fascia ventilator, felt support/eaves protector and eaves comb filler
- 4mm wide ventilation slots comply with BS 5250 : 2011
- Durable and totally resistant to decay
- UV stabilised and colourfast
- Supplied in convenient 1000mm lengths

Quality

- Satisfies all NHBC requirements
- Manufactured to BS EN ISO 9001 and BS IN ISO 14001
- Complies with all relevant Building Regulations
- Meets all relevant British Standards

Material and Colour Choice

- Manufactured by injection moulding in high density polypropylene
- Available in black only

Installation Advice

- Use to ventilate pitched roofs, where the pitch of the roof is 15 degrees or more, and the roof void is attic or loft space
- Make sure each ventilator is fixed securely into the top of the fascia board using screws or nails through the fixing holes provided
- Products designed so that the roofing felt will be cut back flush with the edge of the fascia board, and not dressed out into the gutter
- Ventilation must be provided for the full length of the eaves and along both sides of the building to create a cross flow ventilation action

How to Order

- Specify product code with C if integral eaves comb filler is needed
- Measure the overall length of the eaves to be ventilated and divide by 1000mm to determine the number of ventilators required
- Order in quantities of 10 (3014C) and 20 (3014)

Product Codes

Free airflow	Length	Eaves comb	Pack quantity	Product code
10,000mm ² per meter	1000mm	Yes	10	3014C
10,000mm ² per meter	1000mm	No	20	3014

Bill of Quantity

Over fascia ventilation system 1000mm (10mm airflow)

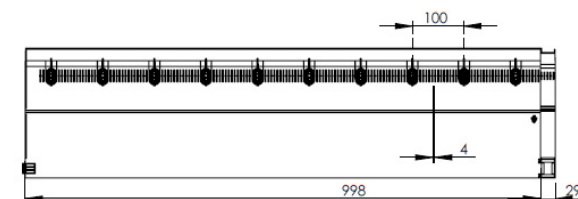
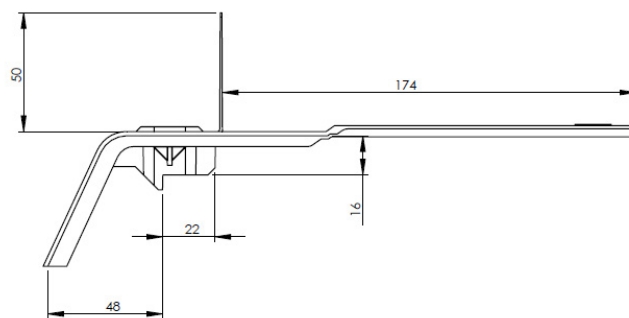
G20 Carpentry/Timber Framing/First Fixing
Clause

910^ EAVES SOFFIT VENTILATION

- Manufacturer: Timloc Building Products, Timloc House, Ozone Park, Howden, East Yorkshire, DN14 7SD. T: 01405 765567 W: www.timloc.co.uk
- Product Reference: 3014C or 3014
- Type: Over Fascia Ventilation System (1000mm) 10mm Airflow
- Colour: Black
- Airway: Provide the equivalent of a continuous opening of not less than 10mm for the full length of eaves.

Product Dimensions

3014C



3014

