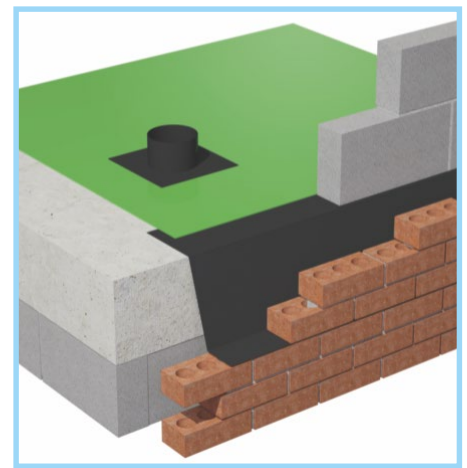
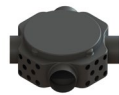


Gas Barrier and Damp Proof Membrane Cavity Tray Systems and Accessories

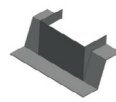
Working in conjunction with radon, methane, CO2 and hydrocarbon gas barrier systems to contain rising gases across the footprint of the building



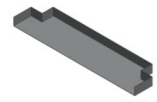
Change of level units



Radon sumps



Column cloak



Threshold internal protection tray TPT01

Use

- In areas outlined in BRE document 'Radon' guidance on protective measures in new dwellings
- When gas protection is required across the footprint of the building
- Crossing cavity wall constructions to maintain gas barrier integrity
- Forming internal perimeter trays to allow membranes continuity
- Following a risk assessment where the requirement is for a good gas protection measure against Radon, Co2, Methane and Hydrocarbon
- To be designed and installed in a continuous system around the whole building perimeter

Features and Benefits

- Preformed mouldings eliminate the need for site fabrication to prevent errors through poor workmanship
- Easy to handle, flexible, tough, durable and puncture resistant
- Can be used for multi-storey or high-loading applications – will not extrude under high loads up to the point of compression failure of wall
- Range of standard components with special tailor made accessories available
- Fully itemised scheduling service

Quality

- Manufactured to BS EN ISO 9001 and BS EN ISO 14001
- Satisfies all NHBC requirements
- Meets BRE requirements
- Complies with Building Regulation Approved Documents C1 and C2
- Meets all relevant British Standards

Material and Colour Choice

- Formed in 2mm medium density polyethylene and/or polypropylene
- Available in black only

Installation Advice

Units will require tape and seal - tape sold separately. Use Gtape01 to make the seal between joint surfaces. Use Gtape02 to seal upper surface to minimise lap lifting if used in concrete floors

Products in the Range

Preformed cavity tray system

Works by reducing on site exposure to the membrane through the use of independent preformed and rigid cavity trays installed to the perimeter of the building, in both the cavity wall with our PCT range and installed at the slab edging with our SPT range.

PCT Range - Horizontal cavity wall perimeter trays

Supplied in 2.5 metre lengths and manufactured from heavy duty 2mm polypropylene. They should be installed continuously around the external perimeter of a building to allow the membrane to be laid at a later stage and so prevent damage as building works proceeds.

Corners - PCT and SPT ranges

Available in both SPT and PCT ranges and manufactured from heavy duty 2mm polyethylene. The standard corners are 90° but a wide range of options are available and selection is by cavity size, wall construction and damp proof course or slab rise required.

Stopends & change of level units

Available in the PCT range and manufactured from heavy duty 2mm PP. Suitable if breaks appear in the natural run of the cavity tray system, and available in cavity size and rise options with 75, 150 and 225mm steps.

Radon sumps (RSUMP01)

Prefabricated sumps are required when a sub floor depressurisation is required under full radon protection. The sump is installed beneath the floor slab in non suspended floor applications and vented to atmosphere via a connecting 110mm drainage pipe to an external source and capped off with proprietary products i.e. air bricks & telescopic under floor vents or roof vents.

Televent gas sleeve tray (TST01)

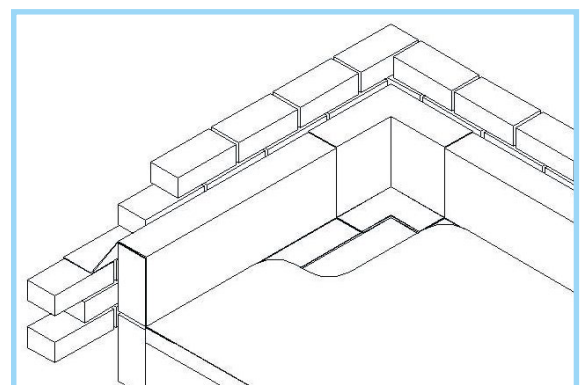
For use when telescopic under floor vents need to pass through a perimeter cavity and still maintain gas tight integrity.

Threshold internal protection tray (TPT01)

Designed for detailing rebated areas inside door threshold to maintain water and gas tight integrity without having to trim membrane to fit. Due to possible variations in size, threshold dimensions will be required.

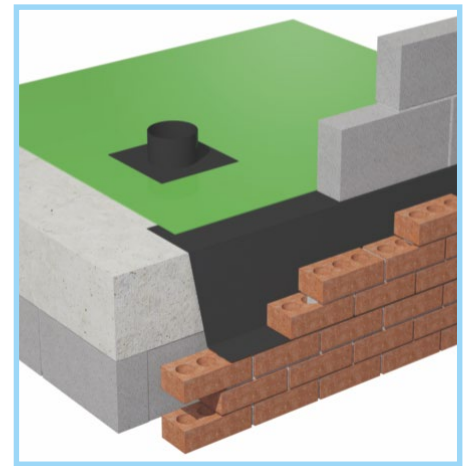
Column cloaks (made to order)

Non standard applications can require gas and water integrity around columns and stanchions. Timloc will design and produce rigid preformed units that are user friendly: simply contact our technical department.



Gas Barrier and Damp Proof Membrane Cavity Tray Systems and Accessories

Working in conjunction with radon, methane, CO2 and hydrocarbon gas barrier systems to contain rising gases across the footprint of the building.



How to Order

- Timloc can prepare a comprehensive schedule and quotation service. Forward full working drawings and specifications to our technical department
- Orders can be established from written quotations by stipulating number issued

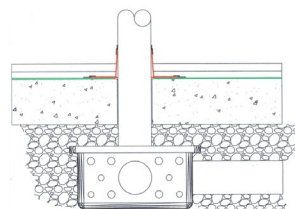
Bill of quantity

F30 Accessories/sundry items for brick/block/stone walling

Clause

360 GAS RESISTANT CAVITY TRAY ACCESSORIES

- Manufacturer: Timloc Building Products, Timloc House, Ozone Park, Howden, East Yorkshire, DN14 7SD. T: 01405 765567 W: www.timloc.co.uk
- Reference: e.g. Top hat pipe collar
- Size: e.g. 110mm
- Product code: e.g. TH110
- Use: For use in all types of floor construction to protect buildings against gas penetration from the ground. To cover the full footprint of the building and to incorporate proprietary accessories for pipe, vent protrusions.



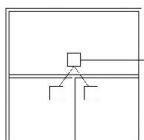
Radon sump illustrating horizontal and vertical 110mm soil pipe for venting with top hat collar

The minimum number of sumps required is 1 per dwelling, but this will be dependent on the foundation construction of the building.

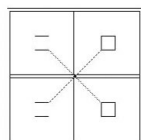
3x sumps req.

4x sumps req.

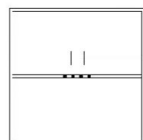
single sump req.



Vented load-bearing masonry



Non-vented load-bearing masonry



Product Codes

Description	Product Code
Radon sump	RSUMP01
Threshold internal protection tray 930mm	TPT01
Televent gas sleeve tray (cavity tray profile req.)	TST01
Gastite sealing tape 15m x 100mm	GTAPE01
Girth tape 75m x 50mm	GTAPE02

Product codes to suit cavity widths of:	50mm	75mm	100mm
PCT150 Perimeter cavity tray 150mm rise	5101	5102 †	5103
PCT150 External 90° corner cavity tray	5110	5112	5114
PCT150 Internal 90° corner cavity tray	5111	5113 †	5115
PCT150 Cavity tray stopend RH	5130 †	5132 †	5134
PCT150 Cavity tray stopend LH	5131 †	5133 †	5135
PCT150 Change of level 75mm step	9060 †	9063 †	9066
PCT150 Change of level 150mm step	9061 †	9064 †	9067
PCT150 Change of level 225mm step	9062 †	9065 †	9068
PCT225 Perimeter cavity tray 225mm rise	5104 †	5105 †	5106
PCT225 External 90° corner cavity tray	5116	5118 †	5120
PCT225 Internal 90° corner cavity tray	5117	5119 †	5121
PCT225 Cavity tray stopend RH	5136	5138 †	5140
PCT225 Cavity tray stopend LH	5137	5139 †	5141
PCT225 Change of level 75mm step	9070 †	9073 †	9076 †
PCT225 Change of level 150mm step	9071 †	9074	9077
PCT225 Change of level 225mm step	9072 †	9075 †	9078

† For internal use only