

# CAVITY WALL WEEP VENT DATASHEET

**Designed for cavity ventilation and discharging water from external walls**

## Use

Any situation where water must be discharged from an external wall, e.g:

- At ground floor slab level.
- Within cavity tray systems.
- Over external lintels.
- Where a cavity must be ventilated.
- On external walls - 100mm or more in thickness - built from brick, block or stone.

## Features & Benefits

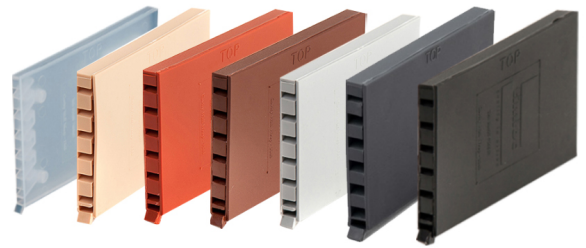
- Purpose made and pre-formed to guarantee reliable discharge of water.
- Less prone to inadvertent pointing-up than weep holes formed by simply leaving the perp. joint open.
- Integral front grille prevents entry of large nest building insects into the cavity when using product 1143.
- Range of colours to blend with brick or mortar colour: Terracotta, Buff, Brown, Clear, White, Grey, Black or Blue Black.
- Individual extension pieces (1144) can be clipped together to create a longer extension.
- 1143 airflow = 165mm<sup>2</sup> Free area/unit.

## Quality

- Satisfies all NHBC requirements.
- Manufactured to BS EN ISO 9001 and BS EN ISO 14001.
- Complies with all relevant Building Regulations.
- Meets all relevant British Standards.

## Material & Colour

- 1143 is injection moulded in UV stabilised polypropylene.
- 1143 available in Terracotta, Buff, Brown, Clear, White, Grey, Black or Blue Black.
- 1144 is available in Natural only.



## How to Order

- To calculate quantities divide the overall length of the cavity tray, DPC or lintel by 450mm and round up to the nearest whole number.
- Check that the external wall is a standard 102.5mm brick or 100mm block thickness, if it is not please state the thickness on your order.
- State the product number, type, colour etc. on your order.

## Environmental Product Declaration

A quantification of environmental information regarding the life cycle of the Cavity Wall Weep Vent and Extension. GWP total is for production stages A1-A3. Verified in accordance with ISO 14025. View the full EPD at [timloc.co.uk](http://timloc.co.uk).

Product	EPD Reference	EPD Mass (KG)	GWP A1-A3 (KG CO2e)
TE, BU, BR, GR, BL & BB	EPD HUB, HUB-1836	0.018	4.50E-04
WH & CL	EPD HUB, HUB-2180	0.0188	2.63E-02
1144	EPD HUB, HUB-2180	0.014	1.96E-02

## Bill of Quantity

F30 Accessories/sundry items for brick/block/stone walling  
Clause 132^ WEEP HOLES

- Form with plastic perpendicular units to manufacturer recommendations at not greater than 900mm centres immediately above base of cavity, external openings and stepped dpcs. Provide not less than two weep holes over openings.
- Manufacturer: Timloc Building Products, Timloc House, Ozone Park, Howden, East Yorkshire, DN14 7SD. T: 01405 765567 W: [www.timloc.co.uk](http://www.timloc.co.uk)
- Reference: 1143/1144
- Colour: Terracotta, Buff, Brown, Clear, White, Grey, Black or Blue Black

## Installation Advice

- Wall weep vents should be used wherever water could collect inside a cavity wall, such as over external lintels, or wherever a cavity tray system is installed
- To work effectively wall weep vents should be placed directly on top of the base of a cavity tray or DPC, or on the front flange of the lintel
- Wall weep vents should be spaced at 450mm centres to comply with NHBC recommendations
- Care should be taken to ensure the wall weep vent is kept clear of mortar and does not become blocked. This is particularly important at the back of the weep vent which could be blocked by mortar droppings from above.

## Product Codes

Description	Height	Width	Length	Pack Quantity	Lead Time	Product Codes
Cavity Wall Weep Vent	65mm	10mm	100mm	50	Next Working Day	1143
Extension piece	65mm	10mm	50mm	50	Next Working Day	1144

State required colour at the end of the 1143 product code: **TE**:Terracotta, **BU**:Buff, **BR**:Brown, **CL**:Clear, **WH**:White, **GR**:Grey, **BL**:Black, **BB**:Blue Black