

Z-SERIES

METAL ACCESS PANELS

Metal access panels for access to mechanical, electrical and other building services

Use

- Provides access to services and connections behind dry lined walls, ducts and ceilings
- For applications where plastic access panels are not suitable and a fire rating is not required
- Ideal solution for meeting Part J and the gas safety industry's concealed boiler flue inspection access requirements (non-fire rated applications)

Features and Benefits

- Purpose made product saves time and money compared with traditional joiner-made access doors
- Excellent aesthetic appearance and finish
- Flush fitting door panels
- Visible picture frame surround smartly conceals cut out edges and contributes to a faster installation
- Smooth and enduring polyester powder coated finish
- Allows for painting if required
- Quick and straight forward to install
- 50mm deep frame for deeper wall and ceiling fixing
- Hinged door panel with budget lock

Quality

- Helps to meet Building Regulation Document Part J – Concealed Flues in Voids (2010 edition)

Material and Colour Choice

- Electro galvanised mild steel
- Polyester powder coated smooth finish 20% gloss
- White – RAL 9010

Installation Advice

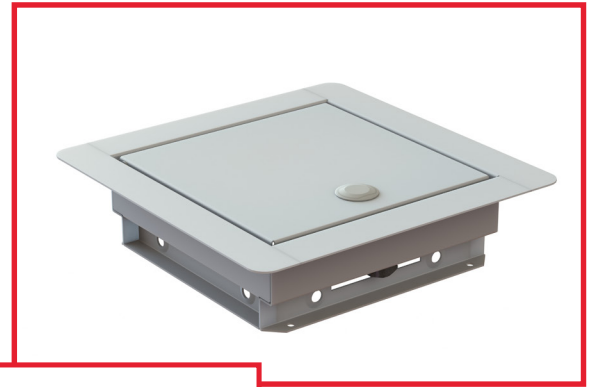
- Please contact the Timloc Technical team

Care and Maintenance

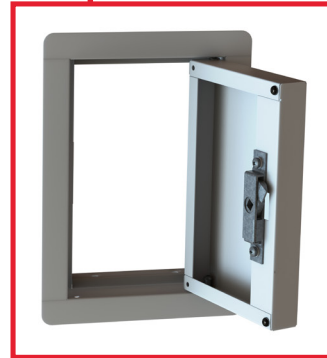
- Clean using a soft cloth with a mild detergent

How to Order

- State which size of panel is required and confirm the frame fitting size



Z-Series metal access panel - Z2001



Z-Series metal access panel - Z2002

Bill of Quantity

L20 Doors/Shutters/Hatches

Clause

630^ HATCHES

- Manufacturer: Timloc Building Products, Timloc House, Ozone Park, Howden, East Yorkshire, DN14 7SD. T: 01405 765567 W: www.timloc.co.uk
- Type: Timloc Metal Access Panels - Picture Frame
- Application: Wall, ceiling, cupboard or voids
- Frame type: Picture
- Colour: White - RAL 9010 smooth 20% gloss polyester powder coating

Product Codes

Frame Fitting Size	Clear Opening Size	Overall Panel & Frame Size	Product Codes
155 x 155mm	128 x 110mm	198 x 198mm	Z2001
155 x 235mm	110 x 208mm	198 x 278mm	Z2002
205 x 205mm	178 x 160mm	248 x 248mm	Z2003
305 x 305mm	278 x 260mm	348 x 348mm	Z2004
355 x 355mm	328 x 310mm	398 x 398mm	Z2005
455 x 455mm	428 x 410mm	498 x 498mm	Z2006
555 x 555mm	528 x 518mm	598 x 598mm	Z2007
605 x 305mm	578 x 260mm	648 x 348mm	Z2008
605 x 605mm	578 x 560mm	648 x 648mm	Z2009

Cross section

Z-Series metal access panels

