

THERMO-LOC FR30

30-minute fire rated cavity closer

Fire rated barriers for eliminating damp and cold bridging around doors, windows and sills

Use

- To close the cavity at external doors, window jambs and sills
- To provide thermal insulation and prevent 'cold bridging'
- To provide a DPC at external doors, window jambs or sills
- 30 minutes fire rating and minimum 15 minutes insulation
- Suitable for cavities up to 300mm
- Suitable for masonry walls

Features and Benefits

- Provides an effective DPC and thermal barrier between frame, inner and outer wall leaf
- Thermal conductivity of 0.036W/mK
- Exceeds the minimum thermal resistance path of 0.45m²K/W stipulated in 'Part L' accredited construction details
- Rigid profile extrusion allows both first and second fix
- Suitable for all frame and sill positions (see Fig.1)
- Durable and resistant to decay
- Insulation option to suit your requirements both thermal and fire rated
- Global warming potential of zero
- Ozone depletion potential of zero
- Available fully rebated - Check reveal (single flange)(see Fig. 2)

Quality

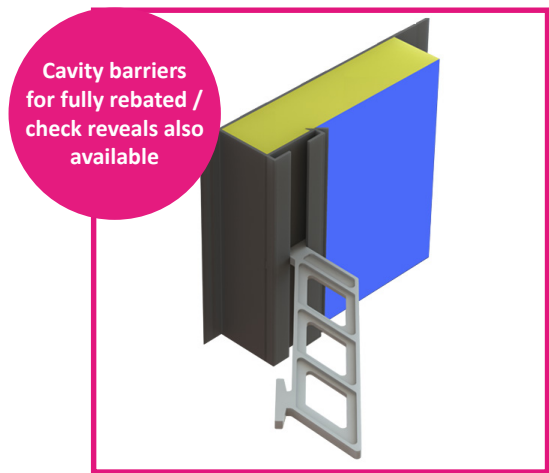
- Independently tested by Warrington Fire
- Satisfies NHBC Standards
- Manufactured to BS EN ISO 9001 and BS EN ISO 14001
- Complies with Building Regulation Approved Documents C, B, L1 & L2
- Complies with 'Part L' accredited construction details
- Complies with the Scottish Building Standards 'Technical handbook'
- Satisfies BRE document 'Thermal insulation: avoiding risks'
- Meets all relevant British Standards

Material and Colour Choice

- Rigid profile extruded in grey UPVC
- Supplied in 2.4 metre lengths
- Standard cavity options available 50mm - 300mm
- Rockfibre mineral wool (FR) insulation 0.036W/mk
- Polyethylene bag encapsulates insulation for moisture protection

Installation Advice

- Can be used in both first and second fix applications
- Cut the cavity closer into required lengths allowing the jamb section to overlap the sill section and to butt the underside of the lintel
- In first fix application the cavity barrier should be nailed to the jamb/sill of the door or window frame and the whole assembly built in as work proceeds. Alternatively the barrier can be built in sections using fixing ties as work proceeds.
- For second fix applications, the cavity closer is pushed into the open cavity after building work is complete. The compressible nature of the exposed insulation material is used to create a friction fit in the cavity, secure nail fixing is required.
- Joining 'off cut' sections should not be carried out for the FR range



Thermo-loc FR30 Single Profile

Single Profile | 50mm - 100mm cavities



Double Profile | 105mm - 300mm cavities



Fig.1 Flush jamb

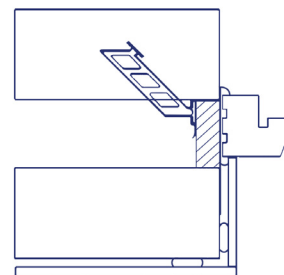
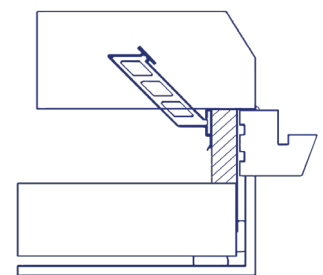
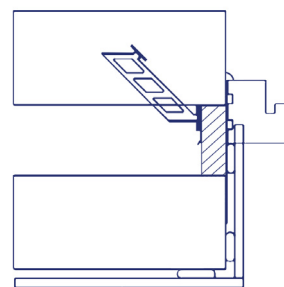


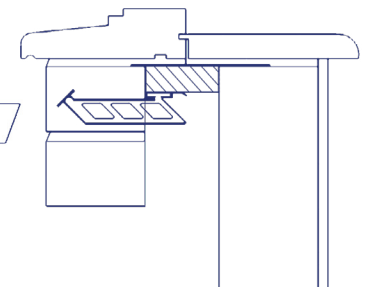
Fig.2 Fully rebated check reveal



Staggered jamb



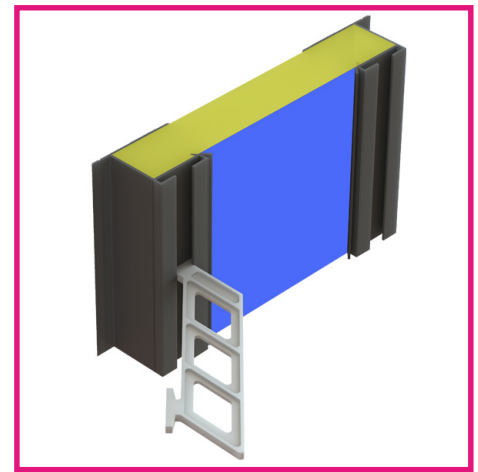
Sill detail



THERMO-LOC FR30

30-minute fire rated cavity closer

Fire rated barriers for eliminating damp and cold bridging around doors, windows and sills



Thermo-loc FR30 Double Profile

How to Order

- Establish the cavity width and select the correct cavity closer width, or the next size up to ensure the cavity can be closed
- In jamb and sill applications, first estimate the total length of cavity barrier required, then order the correct number of individual 2.4 metre lengths so no joint pieces
- Fixing ties are available for secure fixing if required (particular attention around door openings). Allow for ties fitted at 450mm centres

Technical Considerations

- BRE Document 'Thermal insulation: avoiding risks' and Robust Details stipulate: "When a window or door frame is set back behind the inner face of a dense outer masonry leaf, it should overlap an insulated closer by a minimum of 30mm for BRE exposure zones Sheltered to Severe; but fully rebated (check reveals for zones Very Severe" (see Fig.2)
- With reference to insulation, the products in this range do not use, contain or produce Urea Formaldehyde, CFC's or indeed any of the so called soft CFC's, ie. HCFC's & HFA's. They conform to the Montreal Protocol and have an ozone depletion potential of zero and global warming potential of zero.

Product Codes

Thermo-loc 30-minute fire-rated cavity barriers

Product Code	Description	Cavity Width	Length	Pack Quantity	Lead Time
CC2.4FR/50	Thermo-loc FR30	50mm	2.4m	10	Next working day
CC2.4FR/65	Thermo-loc FR30	65mm	2.4m	10	Next working day
CC2.4FR/75	Thermo-loc FR30	75mm	2.4m	10	Next working day
CC2.4FR/90	Thermo-loc FR30	90mm	2.4m	10	Next working day
CC2.4FR/100	Thermo-loc FR30	100mm	2.4m	5	Next working day
CC2.4FR/125	Thermo-loc FR30	125mm	2.4m	5	Next working day
CC2.4FR/150	Thermo-loc FR30	150mm	2.4m	3	Next working day
CCFIX	Fixing ties - 100 pack	-	-	100	Next working day

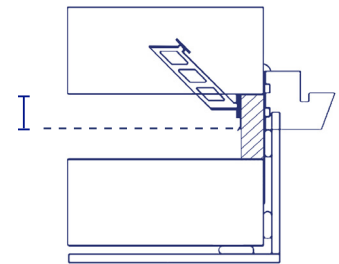
NB. Non standard cavity sizes upto 300mm available to special order

NON STANDARD & SPECIAL LEAD TIMES

- Orders for non standard and special sizes upto 50 pieces received before 12pm - Next working day.
- Orders received after 12pm will be despatched the following working day.
- Orders for non standard and specials sizes over 50 pieces - 3 working days.

Fig. 2

At least 30mm overlap to window frame



Bill of Quantity

F30 Accessories/sundry items for brick/block/stone walling Clause

180 | CAVITY CLOSURES FOR CLOSING AROUND WINDOW & DOOR OPENINGS

- To extend not less than 150mm beyond ends of lintels/bridgings.
- Manufacturer: Timloc Building Products, Timloc House, Ozone Park, Howden, East Yorks. DN14 7SD. T: 01405 765 567, W: www.timloc.co.uk
- Reference: eg. CC2.4FR/75 (Thermo-loc FR30, 2.4m, 75mm cavity)
- Accessories: Fixing ties available, 6 No. per 2.4m cavity barrier.