

ROOFLINE

by **timloc**

Handed Dry Fix Verges System for Profiled Roof Tiles

A robust, attractive and weather resistant verge system alternative to wet mortar bedding.



Use

- Large format, interlocking concrete and clay profiled tiles
- Batten gauges between 260-345mm
- Most pitched roof types from 15-55°
- Verges with or without bargeboards
- New build and refurbishment projects

Features and Benefits

- Long lasting, reliable and virtually maintenance free
- Protects against wind uplift, water ingress and general deterioration
- Easy, fast, clean and generally safer mortar free installation
- Allows virtually all weather installation
- Extended slotted fixing locator flexibility
- Simple and quick '1st piece' eaves closer installation
- Strong but supple for easy flexing and sliding along the tiles
- Secure fit around the tile reassurance
- Rebated eaves closer design allows for guttering when required
- Maintains consistently smart appearance
- Not impacted by building settlement
- Helps prevent entry of large insects, birds and vermin into the roofline
- Meets mechanical fix legislation requirements
- The system also offers a unique steel fixing bracket option that presents flexible fixing points for use with alternative size counter battens or straight onto tile batten ends. The bracket avoids the reliance of end grain fixing, which can cause splitting and consequential damp penetration issues.

Quality

- Helping to meet BS 5534 Code of practice for slating and tiling
- Complies with all other relevant regulations and standards
- Manufactured to BS EN ISO 9001 and BS EN ISO 14001
- Independently tested and complies with BS8612

Material and Colour Choice

- UV protected, colour fast polypropylene verge, ridge and eaves closer components
- Galvanised steel batten end bracket (optional)
- Available in grey, terracotta, brown and black

Installation Advice

- Please refer to our website www.timloc.co.uk for full installation guidance

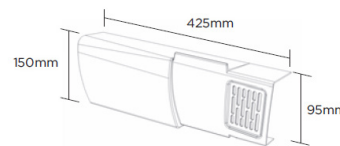
Products in the System

- Dry fix verge right hand piece
- Dry fix verge left hand piece
- Eaves starter pack L&R
- Universal dry fix half round ridge end cap
- Universal dry fix angled ridge end cap
- End grain batten bracket (optional)

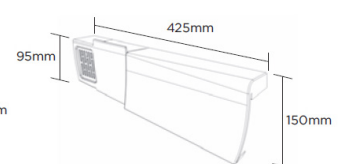
How to Order

- Select the relevant verge system colour for the project
- 1 verge piece is required for each roof tile in the sloping run
- Verge pieces are handed to suit left and right handed slopes
- Select the ridge shape for the apex of the system – angled or round
- Eaves closer must be installed at the beginning of each sloping run of dry verge
- 1 optional end grain batten bracket is required for each verge piece installed in the sloping run
- Also available in convenient specific and complete system packs to suit your specific project's requirements

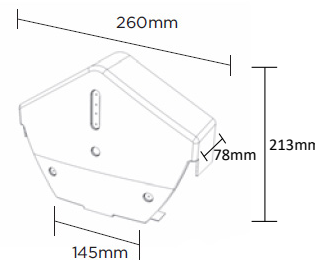
Product Dimensions



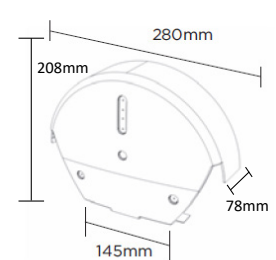
Dry fix verge right hand piece



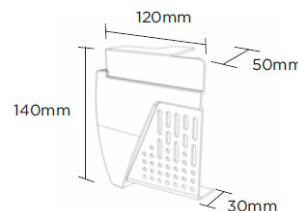
Dry fix verge left hand piece



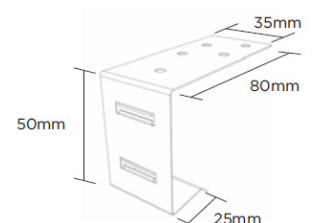
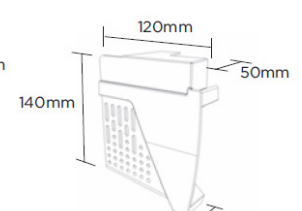
Universal dry fix angled ridge end cap



Universal dry fix half round ridge end cap



Dry fix verge eaves starter pack (right and left units)



Dry fix verge end grain batten bracket

ROOFLINE

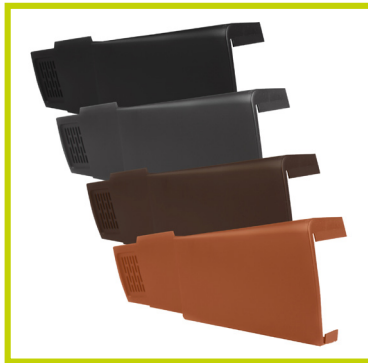
by **timloc**

Handed Dry Fix Verge System for Profiled Roof Tiles

A robust, attractive and weather resistant verge system alternative to wet mortar bedding.



Dry fix verge right hand piece



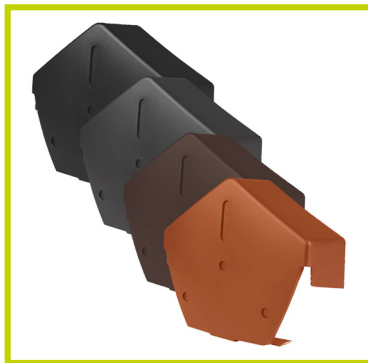
Dry fix verge left hand piece



Dry fix verge eaves starter pair

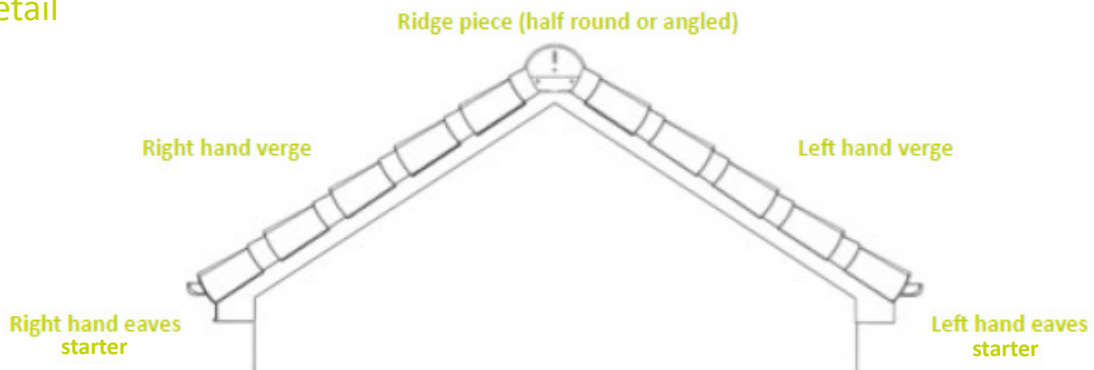


Universal dry fix half round ridge end cap



Universal dry fix angled ridge end cap

Product Detail



Product Codes

Description	Pack Qty	Grey Product Codes	Brown Product Codes	Black Product Codes	Terracotta Product Codes
Dry fix verge right hand piece	20	99117	99116	99137	99118
Dry fix verge left hand piece	20	99121	99120	99138	99122
Universal dry fix angled ridge end cap	1	99109	99108	99107	99110
Universal dry fix half round ridge end cap	1	99113	99112	99136	99114
Dry fix verge eaves starter pack (left & right hand units)	1 + 1	99126	99125	99130	99127
Dry fix verge end grain batten bracket (optional)	20	99124	99124	99124	99124